

SAE Net Horsepower: 177 HP (132 kW)
Operating Weight: 56,900 lbs. (25 800 kg)
Digging Depth: 22 ft 8 in (6.90 m)

250x4



Link-Belt
EXCAVATORS

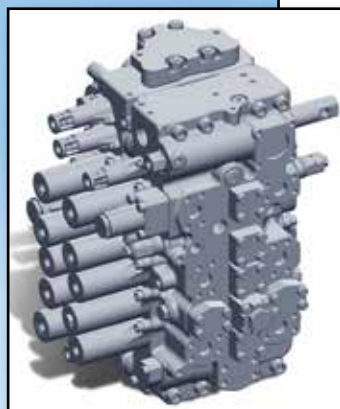


The X4 Series features innovative EPA Final Tier 4 engines from Isuzu that strike the ultimate balance between power, productivity and fuel efficiency. You'll experience up to 10% improved fuel economy, with the added benefit of no costly diesel particulate filters (DPF) to maintain or replace. Three engine modes provide reliable power and control for any machine application. Choose Speed Priority (SP mode) to get jobs done quickly, Heavy (H mode) for the best blend of power and fuel savings or Applied Power (A mode), with 13 different RPM settings for precise control of heavy lifting, fine grading or leveling work.

- EPA Tier 4 Final
- No DPF system to maintain
- Up to 10% improved fuel economy
- 4-to-1 Diesel to Diesel Exhaust Fluid (DEF) ratio
- Two-stage DEF anti-freeze system for protection in harsh operating conditions
- Optimized SCR Auto Regeneration intervals
- VGT Turbocharger



X4 SERIES ULTIMATE PRODUCTIVITY AND EFFICIENCY

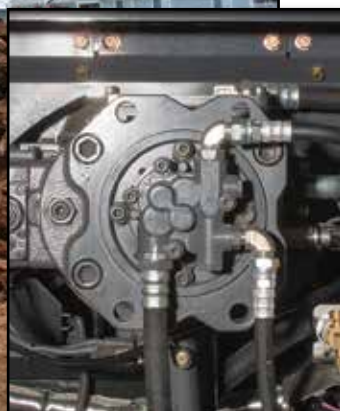


Greater digging power, increased lift capacities and faster cycle times start with our exclusive **UltiFlow Control Valve**, featuring a 30% larger hydraulic passage area, larger spools and advanced controls to maximize hydraulic system control and responsiveness.

Our intuitive **Spool Stroke Control (SSC)** system monitors machine operations and responds with the right hydraulic flow for that application. Pilot pressure sensors detect the type of work being done—such as digging or leveling—and then relays that data to proportional solenoid valves that quickly determine the optimal hydraulic pressures and minimize unneeded operational functions. The sensor system continually monitors machine functions, and SSC is available in all work modes.

Two electrically-controlled Kawasaki variable-displacement axial-piston pumps and one Kawasaki gear pump assure that hydraulic power is delivered precisely when and where it's needed.

The result is more maneuverability and precision across all operating modes, smoother machine operation and improved fuel efficiency...with up to 8% faster cycle times.



Hydraulics

250x4

The X4 Series offers the most advanced and roomiest cab in its class. Comfortable, automotive-grade high-back seat with head restraint provides superior lumbar back support. With a longer and wider seating surface, it reclines to a 65° maximum reclining angle to create a relaxed environment during breaks. Mechanical suspension is standard, with air suspension, seat tilting adjustment and seat heaters available as options.

The cab layout also includes ergonomically-designed arm rests that move with console, maintaining a constant distance between joysticks and arm rests no matter how the seat is adjusted.

- Quiet, pressurized cab
- Joysticks with easy to hold grip and switches
 - ◊ Smooth performance with less resistance
 - ◊ Handy “radio mute” switch
- Optional proportional joysticks w/auxiliary hydraulics control
- Cup holder and storage areas for cell phones and other small items
- Dual halogen cab lights standard
- Optional retractable rear window shade
- Optional front window shade



The High-Definition LED monitor has a full-color 7" display and rivals the resolution found in luxury automobiles. The controls are easy to see and easy to use. The rear-view camera activates automatically whenever the machine is started, and sight guidelines have been added for increased safety.

Here are some of the other functions the monitor displays:

- Engine coolant and hydraulic oil temperatures
- Displays fuel level, travel mode, work mode, attachment mode
- Shows fuel consumption history, per day or per hour
- Track up to 13 service interval reminders
- System/Machine warning messages
- Monitor SCR Auto Regeneration
- Select and set up attachments
- View machine information and working history
- Adjust hydraulic flow
- Easier-to-set auxiliary hydraulic pressure
- Auto-adjusts for time and calendar
- Anti-theft password option
- 18 languages available

A Safe and Secure Environment for Operators

Safety was a primary design consideration for the X4 Series, both from an operational and service standpoint.

- Full time rear camera display
- Optional right-hand and left-hand side cameras
- ROPS and FOPS Level 1 certified, optional FOPS Level 2 head guard available
- Optional LED lighting available
 - ◊ Choose cab-top mount or around-machine packages
 - ◊ Exceptional visibility
 - ◊ Improved safety for checking around the machine
 - ◊ Offers brightness levels close to 'sunlight'
 - ◊ 3X brighter than halogens, consume less energy
- ISO-compliant guard rails and hand rails along upper structures
- Engine covers open towards counterweight, automatic stopper system and gas damper for safety

Cameras



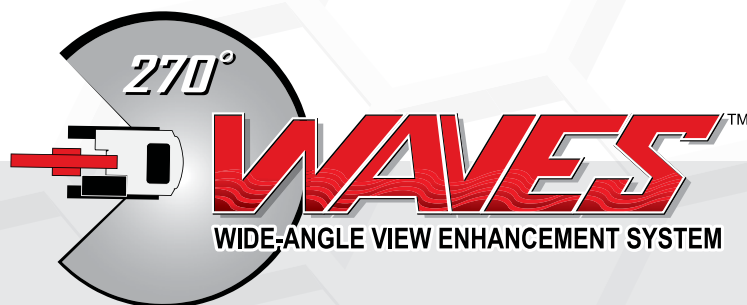
FOPS Level 2 head guard



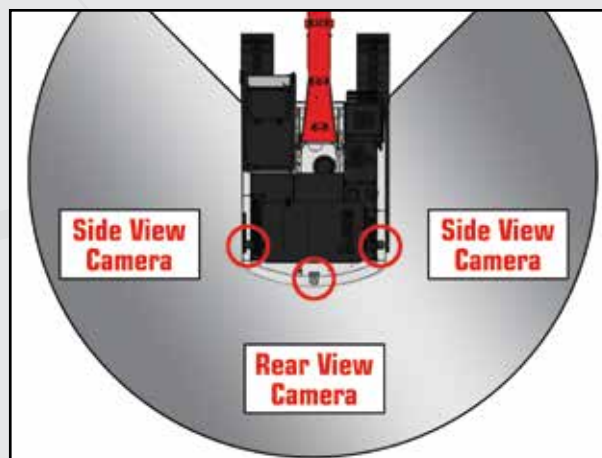
LED lighting



ISO-compliant guard rails and hand rails, engine cover opens towards counterweight



For the ultimate in safety and visibility, X4 machines can be fitted with the **Wide Angle View Enhancement System** or **WAVES** for short. Using three closed-circuit cameras, this optional viewing system provides an unbelievable **270° visual coverage** around the machine, eliminating any potential blind spots from the operator's line of sight. WAVES images can be displayed on the standard X4 monitor.





Maintenance is a snap, with ground level access to all routine service points, including batteries, fuel filters, engine oil filter, dual-element air filter and cab fresh air filter.

- Dual removable screens cover all coolers and are easy to remove and clean from ground level...no tools needed!
- A/C Condenser tilts for easy cleaning and maintenance
- Improved battery disconnect switch with no keys needed
- Easy battery compartment access; 2 hand-turn knobs
- Convenient ground-level sample ports in pump compartment
 - ◇ Engine oil
 - ◇ Hydraulic oil
- Green drain plug and hose
- More data collection points for comprehensive maintenance
- Automatic door closer mechanism on side doors
- Quick and easy access to grease all attachment pivot points
- New undercarriage side frame design enables easier cleaning
- In-cab reminders track 13 different maintenance procedures

All X4 machines are backed by an iron-clad 3-year/5,000 hour powertrain warranty - one of the best in the industry

- Extended warranty coverage packages are also available



Serviceability

X4 SERIES ULTIMATE SERVICEABILITY AND SECURITY

24/7 Remote Monitoring and Security for your Machine

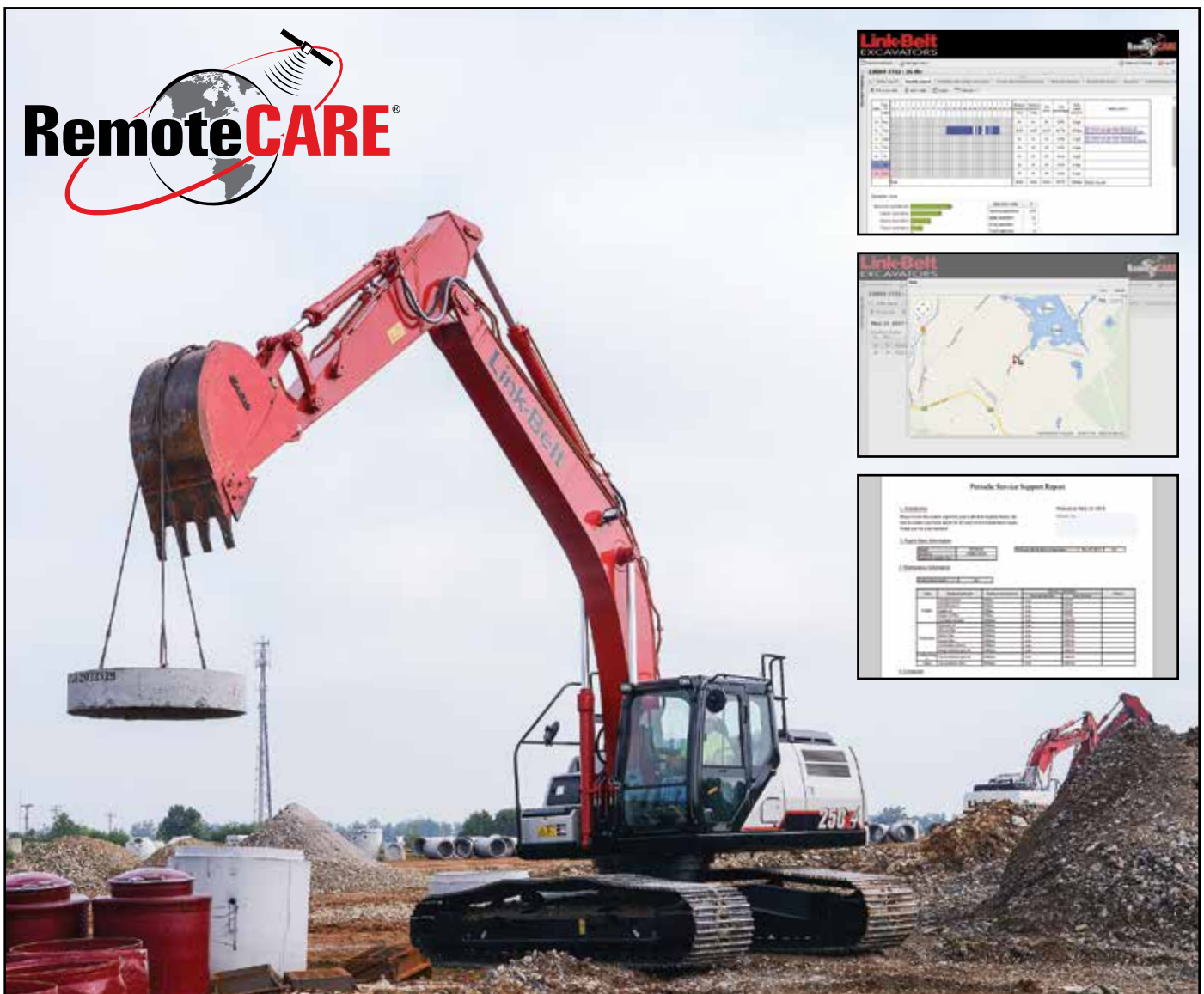
Link-Belt RemoteCARE® is a user friendly management tool that combines Telematics with GPS technology. RemoteCARE provides timely and reliable machine utilization and operational information, as well as assists in theft prevention by offering 24 hour surveillance and geofencing capabilities.

RemoteCARE tracks and records both routine and major service intervals for your machines, giving you more flexibility and control when scheduling maintenance procedures. It also lets you be more proactive if potential failure conditions arise. Whenever a diagnostic trouble code (DTC) is detected, a warning message appears on the machine display, and an email alert is automatically sent to you.

With RemoteCARE you will always know the hours, location, performance, diagnostics and security status of your machines.

RemoteCARE Monitors...

- Machine Location
- Geo-fence & Curfew Range
- Actual Fuel Consumption
- Fuel Levels
- Hour Meter Reading
- Radiator Water Temperature
- Machine Working Time/Idle Time
- Attachment Working Hours
- Working Modes
- Service Maintenance Reminders
- Service Warnings

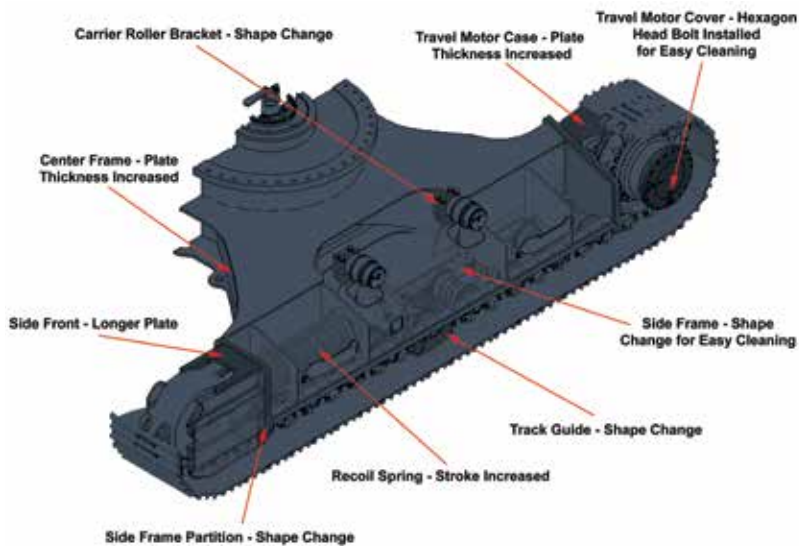
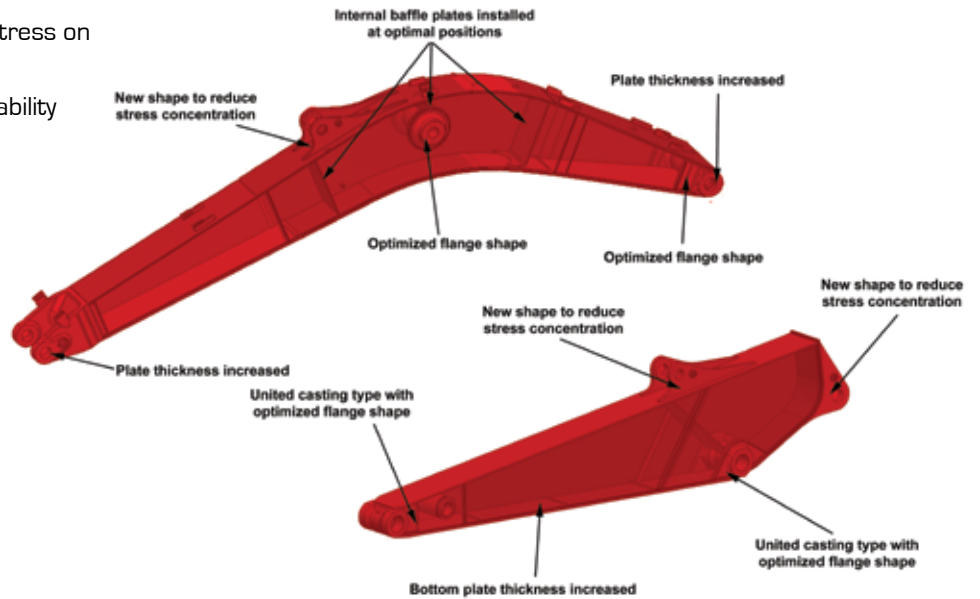


RemoteCARE

X4 machines are rugged and durable, with structural improvements to the boom & arm structures, along with improvements to lower frame and travel components.

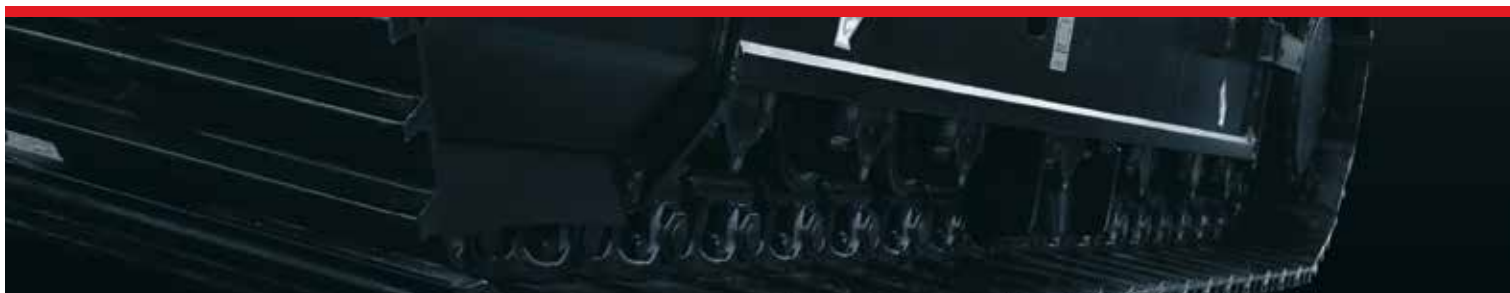
Boom & Arm

- Improved boss shapes reduce stress on boom & arm pin
- Cast boom tip for increased reliability
- Stronger cylinder mounts



Lowgers

- Thicker travel motor case - up to 32% increase
- Thicker plating between side frame and travel motor case - up to 12% increase
- Larger track rollers - up to 7% increase
- Front Idler Hub: Longer hub
- Track Roller: Diameter of tread increased
- Travel Motor Case: Plate thickness increased
- Travel Motor Cover: Hexagon head bolt installed for easy cleaning
- Track Guide: Shape change
- Side Frame Partition: Shape change
- Side Frame: Shape change for easy cleaning





Engine

Isuzu AQ-4HK1X Final Tier 4 turbocharged diesel engine with electronic control (ECM) and high pressure common-rail fuel injection, 4-cylinder, water-cooled, Cooled Exhaust Gas Recirculation (CEGR), Intercooler, Variable-Geometry Turbocharger (VGT), Diesel Oxidation Catalyst (DOC) and Selective Catalytic Reduction (SCR) system with Dosing Control Module and heated DEF lines and tank. Electronic fuel pump and priming, Fuel cooler, Auto-idle start, Auto warm-up, EPF engine protection, dual-stage fuel filtration, remote oil filter, engine oil sample port, green plug oil drain, double element air filter.

SAE J 1349 net horsepower.....	177 hp (132 kW) @ 2,000 rpm
Displacement.....	317 cu in (5.2 L)
Maximum Torque.....	458 lbf-ft (621 Nm) @ 1,800 rpm
Starter.....	24V-5.0kW
Alternator.....	50 amp
Battery.....	(2) 12-volt 92 amp hours



Cab and Controls

ROPS and FOPS Level 1 certified with automatic climate control A/C and heat with defroster, 7" LED Hi-Definition color monitor with full time rear view camera display, fuel efficiency gauge, low-effort joysticks are pre-wired for auxiliary hydraulics, dual cab lights, control pattern changer, safety glass windows, sunroof with sunshade, shockless cab suspension with four fluid cab mounts, SCM High-Back reclining suspension seat, sliding 4-position tilting control consoles, AM/FM sound system with MP3 auxiliary input jack, digital clock, dome light, seat belt, coat hook, cup holder, storage compartments, floor mat, footrests, ashtray, 24V cigarette lighter, 12V outlet, travel alarm, handrails, mirrors, side-entry cab filter, spare parts kit.

Three selectable work modes, RemoteCARE GPS system, anti-theft password protection system, onboard self-diagnostic system with memory and service interval reminders, auto idling system, one-touch decelerator, auto-idle engine shutdown, auto-power boost, neutral safety start, gate-lock safety shutoff.

A/C Rating.....	20,080 BTU/h
Heater Rating.....	21,030 BTU/h
Sound Level - Cab Interior.....	70.0 dB(A)
Sound Level - Exterior.....	100.0 dB(A)



Hydraulic System

Open-center system, two variable-displacement electronically controlled axial-piston pumps and one gear pump for pilot controls, main control valve with one 4-spool section and one 5-spool section with auxiliary spool: stackable, Auxiliary Control System, oil cooler, Auto-Power boost, boom and arm holding valves, 6 micron return filter, firewall, hydraulic oil sample port.

Hydraulic Pumps

Pump Output.....	2 x 61.8 gpm (234 L/min)
Pilot Pump Maximum Flow.....	5.3 gpm (20 L/min)

Relief Valve Settings

Boom/Arm/Bucket.....	4,970 psi (34.3 MPa)
in Power Boost.....	5,410 psi (37.3 MPa)
Swing Circuit.....	4,190 psi (28.9 MPa)
Travel Circuit.....	4,970 psi (34.3 MPa)

Hydraulic Cylinders

	number of cylinders - bore x rod x stroke
Boom.....	2 - 5.1" x 3.5" x 52.6" (130 mm x 90 mm x 1,335 mm)
Arm.....	1 - 5.7" x 4.1" x 65.4" (145 mm x 105 mm x 1,660 mm)
Bucket.....	5.1" x 3.5" x 42.1" (130 mm x 90 mm x 1,070 mm)



Swing

Planetary reduction powered by axial-piston motor, Internal ring gear with grease cavity for swing pinion, Swing bearing is single-row, shear type ball bearing, Mechanical disc swing brake, Auto-power swing.

Swing Speed.....	10.6 rpm
Tail Swing.....	9' 8" (2.95 m)
Swing Torque.....	55,300 lbf-ft (74.9 kNm)



Undercarriage

X Pattern carbody with 15' 3" (4.65 m) LC long undercarriage by 8' 6" (2.59 m) track gauge, Sealed and strutted track chain with track guide, Sealed rollers and idlers, Two-speed independent hydrostatic travel with compact planetary final drive, Disc type brakes, Adjustable track tension, Carbody belly pan.

Carrier Rollers.....	2 per Side
Track Rollers.....	9 per Side
Track Link Pitch.....	7.48" (190 mm)
Shoes.....	51 per Side
Shoe Width.....	31.5" (800 mm)
Ground Pressure.....	5.51 psi (0.038 MPa)



Travel System

Two-speed independent hydrostatic travel with compact axial-piston motors, Hydraulic motor powered output shaft coupled to a planetary reduction drive and track sprocket, All hydraulic components mounted within the width of side frame, Automatic downshift for high torque to overcome obstacles, Spring-applied hydraulic release parking brake built into each motor, Travel motors equipped with counterbalance valve to prevent over-speeding down an incline, Single-pedal straight line travel.

Travel Speeds.....	2.2 - 3.4 mph (3.5 - 5.5 km/h)
Drawbar Pull.....	44,962 lbf (200 kN)
Gradeability.....	70% (35°)



Attachment

Boom.....	19' 2" (5.85 m)
Available Arms	Digging Force
• 9' 10" (3.00 m).....	26,980 lbf (120 kN)
with Auto Power Boost.....	29,230 lbf (130 kN)
• 8' 2" (2.50 m).....	31,700 lbf (141 kN)
with Auto Power Boost.....	34,400 lbf (153 kN)
• 11' 6" (3.52 m).....	24,050 lbf (107 kN)
with Auto Power Boost.....	26,080 lbf (116 kN)
• Bucket Digging Force.....	36,420 lbf (162 kN)
with Auto Power Boost.....	39,570 lbf (176 kN)



Lubricant & Coolant Capacity

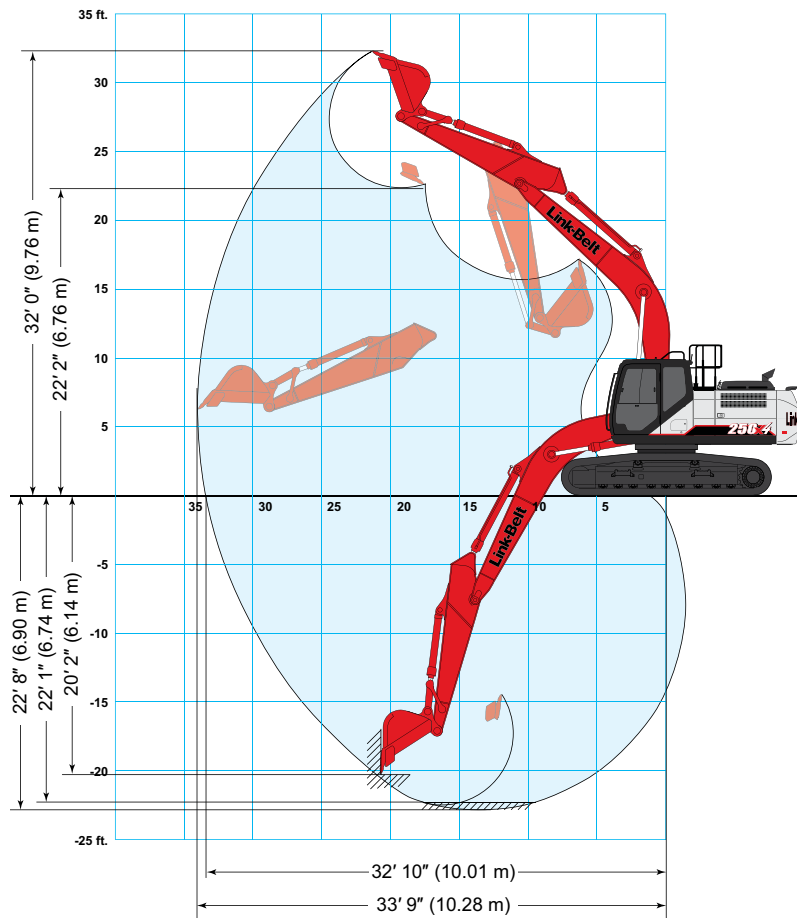
Fuel Tank.....	108 Gallons (410.0 Liters)
Hydraulic System.....	66 Gallons (250.0 Liters)
Hydraulic Tank.....	39 Gallons (147.0 Liters)
Final Drive (per side).....	1.3 Gallons (5.0 Liters)
Swing Drive.....	2.6 Gallons (9.7 Liters)
Engine Oil.....	6.1 Gallons (23.1 Liters)
DEF Tank.....	31 Gallons (120.0 Liters)
Coolant System.....	8.3 Gallons (31.4 Liters)



Operating Weight

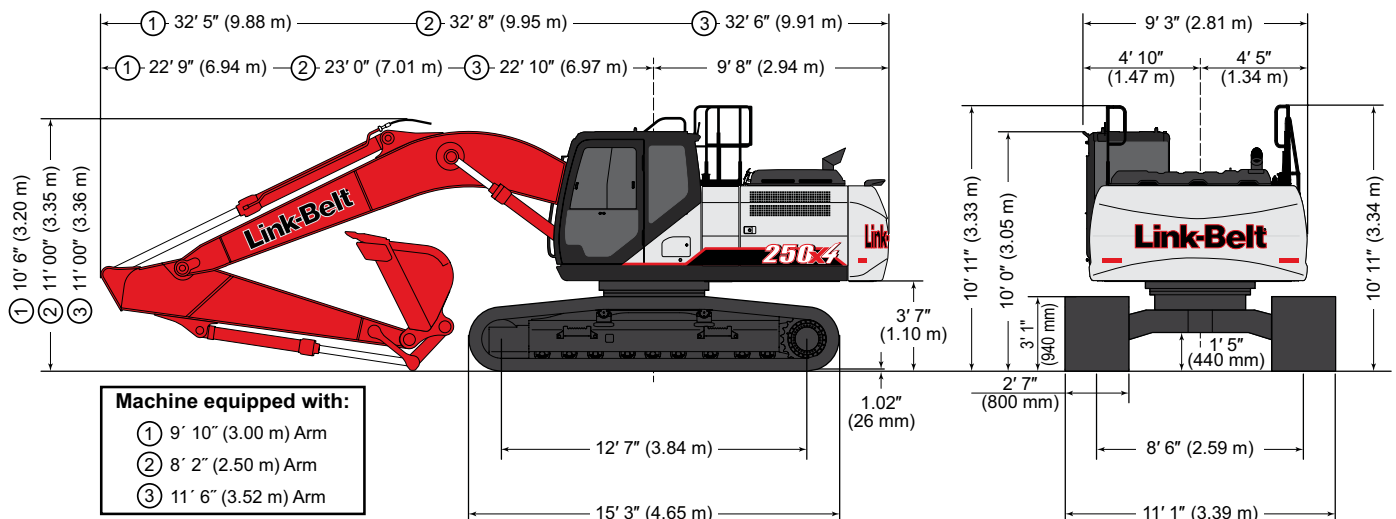
Working weight with 31.5" (800 mm) shoes, 19' 2" (5.85 m) boom, 9' 10" (3.0 m) arm, 1,790 lb. (810 kg) bucket, 11,500 lb. (5 220 kg) counterweight..... 56,900 lbs. (25 800 kg)

Working Range



Machine Equipped with 19' 2" (5.85 m) Boom	Arm 9' 10" (3.00 m)	Arm 8' 2" (2.50 m)	Arm 11' 6" (3.52 m)
A. Maximum reach	33' 9" (10.28 m)	32' 3" (9.82 m)	35' 5" (10.79 m)
B. Maximum reach @ ground level	33' 2" (10.10 m)	31' 7" (9.63 m)	34' 10" (10.62 m)
C. Maximum dig depth	22' 8" (6.90 m)	21' 0" (6.40 m)	24' 4" (7.42 m)
D. Maximum dig height	32' 0" (9.76 m)	31' 4" (9.56 m)	33' 0" (10.07 m)
E. Maximum dump height	22' 2" (6.76 m)	21' 6" (6.55 m)	23' 2" (7.06 m)
F. Digging depth 8' (2.44 m) level bottom	22' 1" (6.74 m)	20' 4" (6.21 m)	23' 10" (7.27 m)
G. Bucket rotation	175°	175°	175°
H. Maximum vertical wall depth	20' 2" (6.14 m)	18' 8" (5.70 m)	21' 11" (6.68 m)

Travel Dimensions



X4 SERIES LIFT CAPACITIES

Radius of Load															
9' 10" (3.00 m) Arm with 19' 2" (5.85 m) Boom and 1,800 lb. (810 kg) Bucket with Power-Boost Applied															
End	Side	5' 0" (1.5 m)		10' 0" (3.0 m)		15' 0" (4.5 m)		20' 0" (6.0 m)		25' 0" (7.5 m)		30' 0" (9.0 m)		Cap at Max. Reach	
		End	Side	End	Side	End	Side	End	Side	End	Side	End	Side	End	Side
+25' 0"	lbs									8,700*	8,700*			5,400*	5,400*
(7.5 m)	kg									4 230*	4 230*			2 430*	2 430*
+20' 0"	lbs									10,700*	10,300			5,100*	5,100*
(6.0 m)	kg									4 900*	4 810			2 310*	2 310*
+15' 0"	lbs									13,600*	13,600*	12,450*	10,000	5,050*	5,050*
(4.5 m)	kg									6 300*	6 300*	5 760*	4 670	2 290*	2 290*
+10' 0"	lbs			29,200*	29,200*	21,250*	21,250*	16,400*	13,900	13,900*	9,600	10,500	7,000	5,200*	5,200*
(3.0 m)	kg			13 660*	13 660*	9 880*	9 880*	7 590*	6 460	6 400*	4 470	4 900	3 260	2 360*	2 360*
+5' 0"	lbs			22,500*	22,500*	26,350*	20,500	19,050*	13,100	13,900	9,200	10,300	6,750	5,500*	5,500*
(1.5 m)	kg			9 550*	9 550*	12 230*	9 510	8 810*	6 090	6 460	4 280	4 790	3 150	2 490*	2 490*
Ground	lbs			21,350*	21,350*	29,200*	19,350	19,350	12,500	13,500	8,850	10,100	6,600	6,000*	6,000*
Line	kg			9 400*	9 400*	13 500*	8 990	9 000	5 810	6 290	4 120	4 700	3 070	2 730*	2 730*
-5' 0"	lbs	20,150*	20,150*	27,050*	27,050*	29,650*	19,000	18,950	12,150	13,300	8,650			6,950*	6,600
(1.5 m)	kg	9 040*	9 040*	12 000*	12 000*	13 700*	8 830	8 820	5 660	6 190	4 030			3 140*	2 990
-10' 0"	lbs	24,850*	24,850*	36,500*	36,500*	28,850*	19,100	19,000	12,250	13,450	8,850			8,550*	7,700
(3.0 m)	kg	11 130*	11 130*	16 120*	16 120*	13 330*	8 890	8 840	5 690	6 250	4 090			3 850*	3 460
-15' 0"	lbs	34,550*	34,550*	37,300*	37,300*	25,750*	19,600	18,650*	12,750					12,000*	9,950
(4.5 m)	kg	15 350*	15 350*	17 320*	17 320*	11 970*	9 110	8 720*	5 890					5 300*	4 430
-20' 0"	lbs			26,200*	26,200*	17,800*	17,800*							14,050*	14,050*
(6.0 m)	kg			12 480*	12 480*	8 590*	8 590*							6 150*	6 150*

Radius of Load															
8' 2" (2.50 m) Arm with 19' 2" (5.85 m) Boom and 1,900 lb. (870 kg) Bucket with Power-Boost Applied															
End	Side	5' 0" (1.5 m)		10' 0" (3.0 m)		15' 0" (4.5 m)		20' 0" (6.0 m)		25' 0" (7.5 m)		30' 0" (9.0 m)		Cap at Max. Reach	
		End	Side	End	Side	End	Side	End	Side	End	Side	End	Side	End	Side
+25' 0"	lbs													7,800*	7,800*
(7.5 m)	kg													3 510*	3 510*
+20' 0"	lbs									11,800*	10,050			7,400*	7,400*
(6.0 m)	kg									5 440*	4 690			3 340*	3 340*
+15' 0"	lbs					12,850*	12,850*	14,700*	14,150	13,300*	9,800	7,550*	6,950	7,300*	6,900
(4.5 m)	kg					6 360*	6 360*	6 780*	6 570	6 140*	4 550	4 440*	3 250	3 310*	3 120
+10' 0"	lbs			33,300*	33,300*	22,400*	21,350	17,300*	13,600	14,050	9,400	10,350	6,800	7,500*	6,400
(3.0 m)	kg			12 750*	12 750*	10 300*	9 920	8 000*	6 310	6 530	4 370	4 820	3 180	3 390*	2 900
+5' 0"	lbs					26,750*	19,950	19,550	12,850	13,700	9,000	10,150	6,650	7,900*	6,300
(1.5 m)	kg					12 330*	9 270	9 090	5 970	6 380	4 190	4 730	3 090	3 580*	2 850
Ground	lbs			19,600*	19,600*	29,600*	19,050	19,100	12,300	13,400	8,700	8,950*	6,550	8,600*	6,500
Line	kg			8 640*	8 640*	13 670*	8 860	8 900	5 720	6 220	4 060	4 670	3 040	3 900*	2 950
-5' 0"	lbs	22,000*	22,000*	27,750*	27,750*	29,450*	18,950	18,900	12,100	13,300	8,650			9,950*	7,200
(1.5 m)	kg	9 810*	9 810*	12 270*	12 270*	13 600*	8 810	8 790	5 620	6 170	4 010			4 490*	3 250
-10' 0"	lbs	27,550*	27,550*	40,300*	37,850	28,050*	19,200	19,050	12,300	13,500	8,850			12,400*	8,550
(3.0 m)	kg	12 310*	12 310*	17 740*	17 610	12 960*	8 920	8 850	5 700	6 290	4 140			5 540*	3 850
-15' 0"	lbs			33,950*	33,950*	23,850*	19,850	16,700*	12,850					14,500*	11,550
(4.5 m)	kg			15 780*	15 780*	11 120*	9 210	7 920*	5 970*					6 570*	5 130

Radius of Load															
11' 6" (3.52 m) Arm with 19' 2" (5.85 m) Boom and 1,750 lb. (790 kg) Bucket with Power-Boost Applied															
End	Side	5' 0" (1.5 m)		10' 0" (3.0 m)		15' 0" (4.5 m)		20' 0" (6.0 m)		25' 0" (7.5 m)		30' 0" (9.0 m)		Cap at Max. Reach	
		End	Side	End	Side	End	Side	End	Side	End	Side	End	Side	End	Side
+25' 0"	lbs									7,350*	7,350*			4,300*	4,300*
(7.5 m)	kg									3 380*	3 380*			1 950*	1 950*
+20' 0"	lbs									9,500*	9,500*	7,200*	7,200*	4,100*	4,100*
(6.0 m)	kg									4 430*	4 430*	3 570*	3 460	1 850*	1 850*
+15' 0"	lbs									11,550*	10,150	9,300*	7,250	4,050*	4,050*
(4.5 m)	kg									5 280*	4 730	4 390*	3 390	1 830*	1 830*
+10' 0"	lbs					19,200*	19,200*	15,250*	14,050	13,000*	9,700	10,550	7,000	4,100*	4,100*
(3.0 m)	kg					8 920*	8 920*	7 040*	6 520	5 990*	4 520	4 930*	3 270	1 880*	1 880*
+5' 0"	lbs			32,550*	32,550*	24,650*	20,850	18,100*	13,250	13,950	9,250	10,300	6,750	4,350*	4,350*
(1.5 m)	kg			13 610*	13 610*	11 420*	9 680	8 350*	6 160	6 480	4 300	4 790	3 150	1 980*	1 980*
Ground	lbs	9,750*	9,750*	22,450*	22,450*	28,250*	19,500	19,400*	12,550	13,500	8,850	10,050	6,550	4,750*	4,750*
Line	kg	4 370*	4 370*	9 850*	9 850*	13 070*	9 060	9 020	5 820	6 290	4 110	4 680	3 050	2 160*	2 160*
-5' 0"	lbs	17,000*	17,000*	25,950*	25,950*	29,500*	18,850	18,900	12,100	13,200	8,550	9,950	6,450	5,450*	5,450*
(1.5 m)	kg	7 750*	7 750*	11 470*	11 470*	13 630*	8 760	8 790	5 620	6 150	3 990	4 620	2 990	2 470*	2 470*
-10' 0"	lbs	22,250*	22,250*	33,300*	33,300*	29,100*	18,850	18,800	12,050	13,250	8,600			6,600*	6,600*
(3.0 m)	kg	9 980*	9 980*	14 720*	14 720*	13 450*	8 780	8 760	5 600	6 150	4 000			2 980*	2 980*
-15' 0"	lbs	32,900*	32,900*	39,800*	38,550	27,000*	19,250	18,950	12,400	12,700*	8,900			8,900*	8,450
(4.5 m)	kg	14 560*	14 560*	18 450*	17 980*	12 510*	8 940	8 820	5 740	6 250	4 150			3 950*	3 790
-20' 0"	lbs			30,950*	30,950*	21,250*	19,650	13,850*	12,700					13,200*	12,400
(6.0 m)	kg			14 570*	14 570*	10 050*	9 140	6 820*	5 920					5 970*	5 450

Notes: Excavator lifting capacities

- Lifting capacities shown should not be exceeded. Weight of all lifting accessories must be deducted from the above lifting capacities.
- Lifting capacities are based on machine standing on firm, uniform supporting surface. User must make allowances for job conditions such as soft or uneven ground.
- Lifting capacities shown do not exceed 75% of minimum tipping loads or 87% of hydraulic capacities. **Capacities marked with an asterisk (*) are limited by hydraulic capacities.**
- Least stable position is over the side.
- Operator should be fully acquainted with the Operator's Manual & Operating Safety Booklet, furnished by LBX before operating the machine.
- Capacities apply only to the machine as originally manufactured and normally equipped by LBX Company, LLC.
- Lift capacity ratings are based on ISO 10567, "Earthmoving Machinery - Hydraulic Excavators - Lift Capacity."

Standard and Optional Equipment

CAB		Wiper & Washer		HYDRAULICS		Long Undercarriage	
12V Power Outlet.....S	Wiper Switch on RH Joystick.....S	Arm Regeneration.....S	Sealed Link Chain.....S	270° Rear-View Camera Display on Monitor...O	Wiper Switch on LH Joystick.....S	Arm Speed Assistance (2 Pump Flow)...S	Steps.....S
AM/FM Sound System.....S	ENGINE	Attachment Cushion Valve.....S	Strutted Track Chain.....S	Anti-Theft Device.....S	50A Alternator.....S	Auto Swing Priority.....S	X-Pattern Carbody.....S
Auxiliary Switches on Control Lever.....S	85A Alternator.....O	Auxiliary Flow Control.....S	UPPERSTRUCTURE	Cab Filter - External.....S	Air Filter (Double Element).....S	Auxiliary Tool Settings (Memory).....S	Belly Pans.....S
Cab Handrails.....S	Air Filter Restriction Indicator.....S	Auxiliary Valve.....S	Center Cover (Over Main CV).....S	Cab Interior Light.....S	Air Pre-Cleaner (Cyclone type).....O	Boom Regeneration.....S	Fuel Tank Belly Pan.....S
Cab ISO-Mounts.....S	Auto Warm-Up System.....S	Boom Speed Assistance (2 Pump Flow)...S	Hand Rail (RH access).....S	Cab Light (2 LED).....S	Auto-Idle.....S	Bucket Curl Assist.....S	ISO Guard Rails.....S
Cab Light (2).....S	Auto-Idle Engine Shutdown.....S	Control Levers Pre-Wired for Auxiliary Hyd...S	Lifting Eyes for Counterweight.....S	Cab Light (2).....S	Battery Disconnect Switch.....S	Control Pattern Changer (2 way).....S	Lockable Fuel Cap and Service Doors.....S
Cab Sun Screen (rear).....S	CEGR (Cooled Exhaust Gas Recirculation)...S	Electronically Controlled Hydraulic Pumps...S	Lockable Tool Box.....S	Clear Roof Window.....S	CEGR (Cooled Exhaust Gas Recirculation)...S	Fire Wall.....S	Rubber Bumper Guards.....O
Climate Control A/C and Heater.....S	Cooling Fan.....S	Free Swing.....O	Turntable Tub.....S	Cup Holder.....S	Diesel Oxidation Catalyst (DOC).....S	Holding Valve (Arm & Boom).....S	Work Lights (Boom and Tool Box).....S
Defroster.....S	Drain for Fuel Tank.....S	Holding Valve (Arm & Boom).....S	ATTACHMENT	Digital Clock.....S	Dual Remote Fuel Filters with.....S	Hose Burst Check Valve.....O	8' 2" (2.50 m) Short Arm.....O
Emergency Exit and Hammer.....S	Water Separators.....S	Hose Burst Check Valve.....O	9' 10" (3.00 m) Arm.....O	Face Vent.....S	EGR Coolers.....S	Hydraulic Filter Restriction Indicator...S	11' 6" (3.52 m) Arm.....O
Floor Mat.....S	Emergency Engine Stop.....S	Hydraulic Oil Sample Port.....S	19' 2" (5.85 m) Main Boom Section...S	FOPS Mat.....S	Engine Idle System.....S	Long Life Hydraulic Oil (5,000 Hour)....S	Auxiliary Pipe Brackets.....S
FOPS Head Guard (Level 2).....O	Engine Oil Sample Port.....S	Long Life Hydraulic Oil (5,000 Hour)....S	Bucket Anti-Clatter Device.....S	FOPS Level 1 Certified.....S	Engine Protection Feature.....S	Neutral Pump De-Stroke.....S	Boom Work Light.....S
Front Guard (Mesh).....O	External Fuel Gauge.....S	Oil Cooler.....S	Chrome Pins.....S	Front Guard (OPG 1,2).....O	External DEF Gauge.....S	Power Boost.....S	Easy Maintenance System (EMS).....S
Front Window One-Touch Lock.....S	Fan Housing.....S	Power Save.....S	HD Bucket Linkage.....O	Gate Lock Hydraulic Activation.....S	Fuel Cooler.....S	Pressure Reading on Monitor.....S	Quick Couplers.....O
Horn.....S	Fuel Filter Restriction Indicator.....S	Proportional Hydraulic Controls.....O	Remote Lube Bank.....S	Hour Meter (Digital).....S	Fuel Management System.....S	Pump Stand-By Pressure.....S	Teardrop Pin Retention Keepers.....S
LED Color Monitor.....S	Fuel Shut-Off Valve.....S	Single Pedal Travel.....S	Thumbs.....O	LED Light Kit for Side Camera (1).....O	Fuel Usage History.....S	Straight Travel Circuit.....S	PARTS KIT
LED Lights for Rear Camera (2).....O	Fuel Usage Monitor.....S	AUXILIARY HYDRAULIC OPTIONS	Bucket Anti-Clatter Device.....S	Magazine Storage Rack.....S	Flow Plug Pre-Heat.....S	Single-Acting Aux. w/ Pedal Activation.....O	Engine Manual.....S
Maintenance Interval Reminders.....S	Idle-Start.....S	Single-Acting Aux. w/ Proportional Joysticks...O	Engine Oil Filter.....S	MP3 Auxiliary Input Jack.....S	Intercooler.....S	Multi-Function Aux. w/ Proportional Joysticks...O	Filter Wrench.....S
On-Board Diagnostic System.....S	Neutral Start.....S	Multi-Function Aux. w/ in-cab pressure.....S	Fuel Filters.....S	One-Piece Right Window.....S	Passive Emissions Regeneration.....S	setting control.....O	Fuel Gun.....S
Radio Mute Switch.....S	One-Touch Idle.....S	Thumb Aux. w/ Proportional Joysticks...O	Grease Gun.....S	Rain Deflector.....S	Radiator / Oil Cooler / Intercooler.....S	Secondary Aux. w/ Proportional Joysticks...O	Green Plug Drain Hose for Engine Oil Drain...S
Rear View Camera.....S	Passive Emissions Regeneration.....S	Combination Aux. w/ Proportional Joysticks...O	Hydraulic Return Filter.....S	Rear View Mirrors (2).....S	Protective Screen.....S	Combination Aux. w/ in-cab pressure.....S	Ignition Keys.....S
RemoteCARE Support System (GPS).....S	Radiator / Oil Cooler / Intercooler.....S	setting control.....O	Pilot Circuit Hydraulic Filter.....S	Roof Sun Shade.....S	Refuel Pump.....O	Bucket Quick Coupler Hydraulics Line....O	Rearview Mirrors.....S
ROPS Certified Structure.....S	Remote Engine Oil Drain.....S	Undercarriage	Work Light for Boom.....S	Safety Glass Windows.....S	Remote Oil Filter.....S	UNDERCARRIAGE	
SCM Air-Suspension Seat with Tilt & Heater...S	Reversible Cooling Fan.....O	600 mm (23.5" in) 3-Bar Steel Grousers...O		SCM Suspension Seat.....S	Selective Catalytic Reduction (SCR).....S	700 mm (27.5" in) 3-Bar Steel Grousers...O	
Seat Recline.....S	Tropical Package.....S	800 mm (31.5" in) 3-Bar Steel Grousers...S		Selectable Monitor Languages.....S	DEF Gauge on Monitor.....S	Carbody Belly Pan (Swivel Guarding).....S	
Small Storage.....S	VGT Turbocharger.....S	Center Track Guide (single).....S		Travel Alarm with Cancel Switch.....S		Center Track Guide (triple).....O	
Trip Meter (Digital).....S		Lashing Points (Tie-Downs).....S					

Equipment Key
Standard - S Optional - O

Bucket Sizes

Bucket Type	SAE Heaped Capacity		Width Outside Lip		Bucket Weight		Number of Teeth	Arm Length			Approval Code For Arm/Bucket Combinations
	(yd³)	(m³)	(in)	(mm)	(lbs)	(kg)		8' 2" 2.50 m	9' 10" 3.00 m	11' 6" 3.50 m	
STDP Standard duty plate	0.80	0.61	24	610	1285	583	3	H	H	H	H.....Heavy material (up to 3,370 lbs./yd³) M.....Medium material (up to 2,700 lbs./yd³) L.....Light material (up to 2,020 lbs./yd³) N/A.....Not applicable
	1.06	0.81	30	762	1458	661	4	H	H	H	
	1.33	1.02	36	914	1630	739	5	H	H	H	
	1.61	1.23	42	1067	1774	805	5	H	M	M	
	1.89	1.45	48	1219	1918	870	5	M	M	L	
	2.16	1.65	54	1372	2091	948	6	L	L	L	
2.43	1.86	60	1524	2239	1016	6	L	L	N/A		
HDP Heavy duty plate	0.80	0.61	24	610	1498	679	3	H	H	H	
	1.06	0.81	30	762	1705	773	4	H	H	H	
	1.33	1.02	36	914	1873	850	4	H	H	H	
	1.61	1.23	42	1067	2080	943	5	M	M	M	
	1.89	1.45	48	1219	2247	1019	5	M	L	L	
	2.16	1.65	54	1372	2454	1113	6	L	L	N/A	
2.43	1.86	60	1524	2621	1189	6	L	N/A	N/A		
XDP Extreme duty plate	0.79	0.60	24	610	2230	1012	3	H	H	H	
	1.05	0.80	30	762	2528	1147	4	H	H	H	
	1.32	1.01	36	914	2749	1247	4	H	H	M	
	1.59	1.22	42	1067	3047	1382	5	M	M	L	
	1.87	1.43	48	1219	3267	1482	5	L	L	N/A	
	2.15	1.64	54	1372	3565	1617	6	L	N/A	N/A	
2.43	1.86	60	1524	3786	1717	6	N/A	N/A	N/A		
POWER HDP for use with ESCO multi-pin grabber only	0.76	0.58	24	610	3025	1372	3	H	H	H	
	0.98	0.75	30	762	3183	1444	4	H	H	H	
	1.21	0.93	36	914	3392	1539	4	H	H	M	
	1.44	1.10	42	1067	3552	1611	5	M	M	L	
	1.68	1.28	48	1219	3709	1682	5	M	L	N/A	
	1.91	1.46	54	1372	3920	1778	6	L	L	N/A	
DITCH	1.30	0.99	60	1524	1767	802	0	H	H	H	
	1.45	1.11	66	1676	1928	875	0	H	H	M	
	1.59	1.22	72	1829	2034	923	0	H	M	M	

Litho in USA 11/14 #LBX2266

LBX® and Link-Belt® are registered trademarks. Copyright 2014. All rights reserved. We are constantly improving our products and therefore reserve the right to change designs and specifications.

Standard & Optional Equipment