

250x4 Long Front

SAE Net Horsepower: 177 HP (132 kW)
Operating Weight: 63,600 lbs. (28 800 kg)
Digging Depth: 47 ft 9 in (14.56 m)



TRACKS
EXCAVATORS
SPLIT

Link-Belt
EXCAVATORS

250x4 Long Front



The X4 Series features innovative EPA Final Tier 4 engines from Isuzu that strike the ultimate balance between power, productivity and fuel efficiency. You'll experience up to 10% improved fuel economy, with the added benefit of no costly diesel particulate filters (DPF) to maintain or replace. Three engine modes provide reliable power and control for any machine application. Choose Speed Priority (SP mode) to get jobs done quickly, Heavy (H mode) for the best blend of power and fuel savings or Applied Power (A mode), with 13 different RPM settings for precise control of heavy lifting, fine grading or leveling work.

- EPA Tier 4 Final
- No DPF system to maintain
- Up to 10% improved fuel economy
- 4-to-1 Diesel to Diesel Exhaust Fluid (DEF) ratio
- Two-stage DEF anti-freeze system for protection in harsh operating conditions
- Optimized SCR Auto Regeneration intervals
- VGT Turbocharger



Engine

X4 SERIES ULTIMATE PRODUCTIVITY AND EFFICIENCY



Greater digging power, increased lift capacities and faster cycle times start with our exclusive **UltiFlow Control Valve**, featuring a 30% larger hydraulic passage area, larger spools and advanced controls to maximize hydraulic system control and responsiveness.

Our intuitive **Spool Stroke Control (SSC)** system monitors machine operations and responds with the right hydraulic flow for that application. Pilot pressure sensors detect the type of work being done—such as digging or leveling—and then relays that data to proportional solenoid valves that quickly determine the optimal hydraulic pressures and minimize unneeded operational functions. The sensor system continually monitors machine functions, and SSC is available in all work modes.

Two electrically-controlled Kawasaki variable-displacement axial-piston pumps and one Kawasaki gear pump assure that hydraulic power is delivered precisely when and where it's needed.

The result is more maneuverability and precision across all operating modes, smoother machine operation and improved fuel efficiency...with up to 8% faster cycle times.



Hydraulics

250x4 Long Front

The X4 Series offers the most advanced and roomiest cab in its class. Comfortable, automotive-grade high-back seat with head restraint provides superior lumbar back support. With a longer and wider seating surface, it reclines to a 65° maximum reclining angle to create a relaxed environment during breaks. Mechanical suspension is standard, with air suspension, seat tilting adjustment and seat heaters available as options.

The cab layout also includes ergonomically-designed arm rests that move with console, maintaining a constant distance between joysticks and arm rests no matter how the seat is adjusted.

- Quiet, pressurized cab
- Joysticks with easy to hold grip and switches
 - ◊ Smooth performance with less resistance
 - ◊ Handy “radio mute” switch
- Optional proportional joysticks w/auxiliary hydraulics control
- Cup holder and storage areas for cell phones and other small items
- Dual halogen cab lights standard
- Optional retractable rear window shade
- Optional front window shade



The High-Definition LED monitor has a full-color 7" display and rivals the resolution found in luxury automobiles. The controls are easy to see and easy to use. The rear-view camera activates automatically whenever the machine is started, and sight guidelines have been added for increased safety.

Here are some of the other functions the monitor displays:

- Engine coolant and hydraulic oil temperatures
- Displays fuel level, travel mode, work mode, attachment mode
- Shows fuel consumption history, per day or per hour
- Track up to 13 service interval reminders
- System/Machine warning messages
- Monitor SCR Auto Regeneration
- Select and set up attachments
- View machine information and working history
- Adjust hydraulic flow
- Easier-to-set auxiliary hydraulic pressure
- Auto-adjusts for time and calendar
- Anti-theft password option
- 18 languages available

A Safe and Secure Environment for Operators

Safety was a primary design consideration for the X4 Series, both from an operational and service standpoint.

- Full time rear camera display
- Optional right-hand and left-hand side cameras
- ROPS and FOPS Level 1 certified, optional FOPS Level 2 head guard available
- Optional LED lighting available
 - ◊ Choose cab-top mount or around-machine packages
 - ◊ Exceptional visibility
 - ◊ Improved safety for checking around the machine
 - ◊ Offers brightness levels close to 'sunlight'
 - ◊ 3X brighter than halogens, consume less energy
- ISO-compliant guard rails and hand rails along upper structures
- Engine covers open towards counterweight, automatic stopper system and gas damper for safety

Cameras



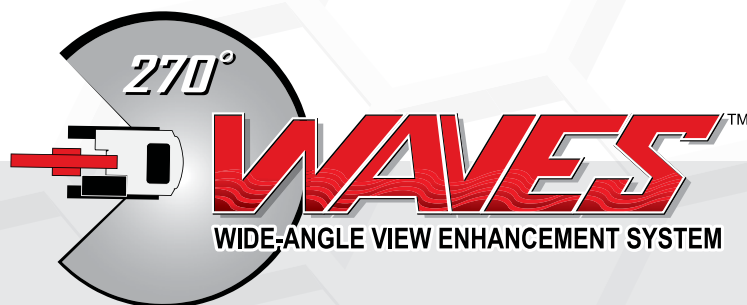
FOPS Level 2 head guard



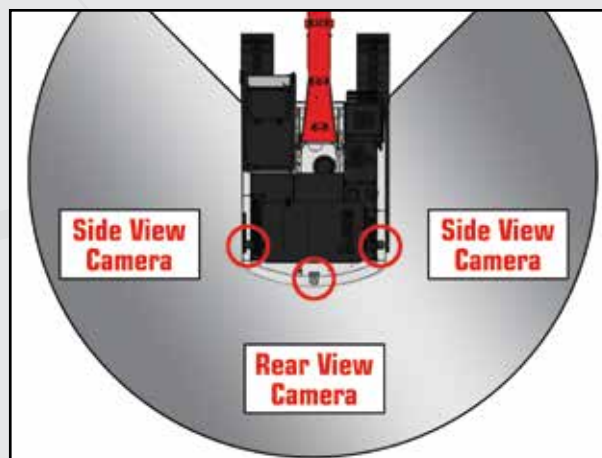
LED lighting



ISO-compliant guard rails and hand rails, engine cover opens towards counterweight



For the ultimate in safety and visibility, X4 machines can be fitted with the **Wide Angle View Enhancement System** or **WAVES** for short. Using three closed-circuit cameras, this optional viewing system provides an unbelievable **270° visual coverage** around the machine, eliminating any potential blind spots from the operator's line of sight. WAVES images can be displayed on the standard X4 monitor.



250x4 Long Front



Maintenance is a snap, with ground level access to all routine service points, including batteries, fuel filters, engine oil filter, dual-element air filter and cab fresh air filter.

- Dual removable screens cover all coolers and are easy to remove and clean from ground level...no tools needed!
- A/C Condenser tilts for easy cleaning and maintenance
- Improved battery disconnect switch with no keys needed
- Easy battery compartment access; 2 hand-turn knobs
- Convenient ground-level sample ports in pump compartment
 - ◇ Engine oil
 - ◇ Hydraulic oil
- Green drain plug and hose
- More data collection points for comprehensive maintenance
- Automatic door closer mechanism on side doors
- Quick and easy access to grease all attachment pivot points
- New undercarriage side frame design enables easier cleaning
- In-cab reminders track 13 different maintenance procedures

All X4 machines are backed by an iron-clad 3-year/5,000 hour powertrain warranty - one of the best in the industry

- Extended warranty coverage packages are also available



Serviceability

X4 SERIES ULTIMATE SERVICEABILITY AND SECURITY

24/7 Remote Monitoring and Security for your Machine

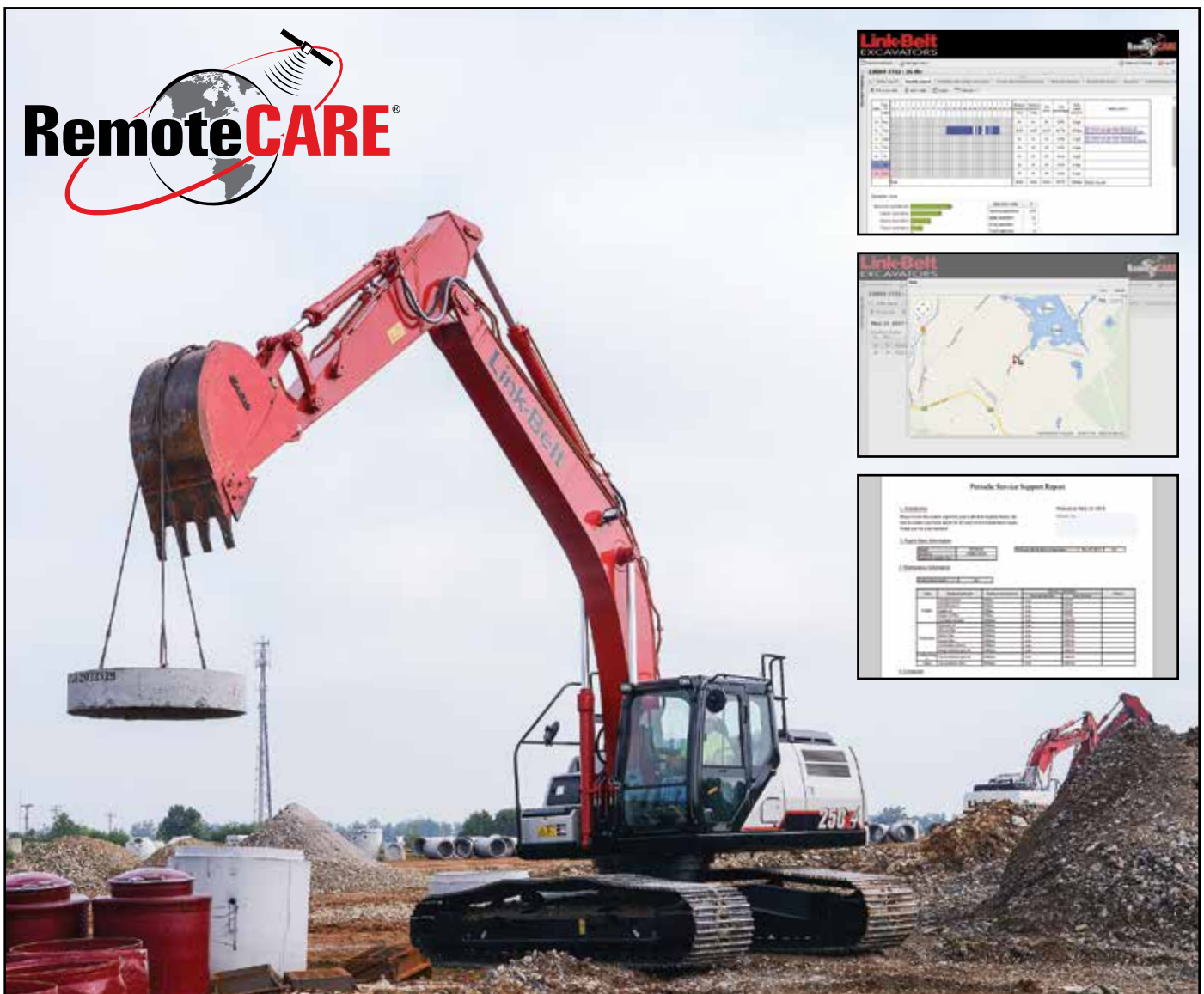
Link-Belt RemoteCARE® is a user friendly management tool that combines Telematics with GPS technology. RemoteCARE provides timely and reliable machine utilization and operational information, as well as assists in theft prevention by offering 24 hour surveillance and geofencing capabilities.

RemoteCARE tracks and records both routine and major service intervals for your machines, giving you more flexibility and control when scheduling maintenance procedures. It also lets you be more proactive if potential failure conditions arise. Whenever a diagnostic trouble code (DTC) is detected, a warning message appears on the machine display, and an email alert is automatically sent to you.

With RemoteCARE you will always know the hours, location, performance, diagnostics and security status of your machines.

RemoteCARE Monitors...

- Machine Location
- Geo-fence & Curfew Range
- Actual Fuel Consumption
- Fuel Levels
- Hour Meter Reading
- Radiator Water Temperature
- Machine Working Time/Idle Time
- Attachment Working Hours
- Working Modes
- Service Maintenance Reminders
- Service Warnings



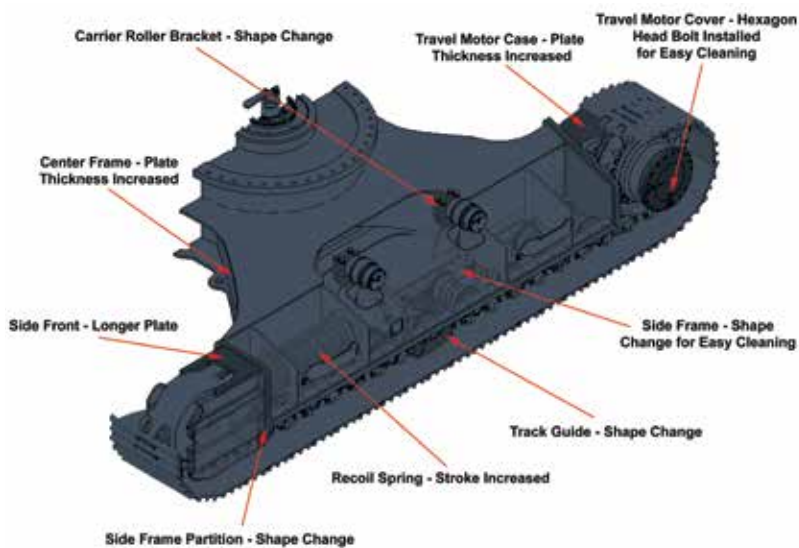
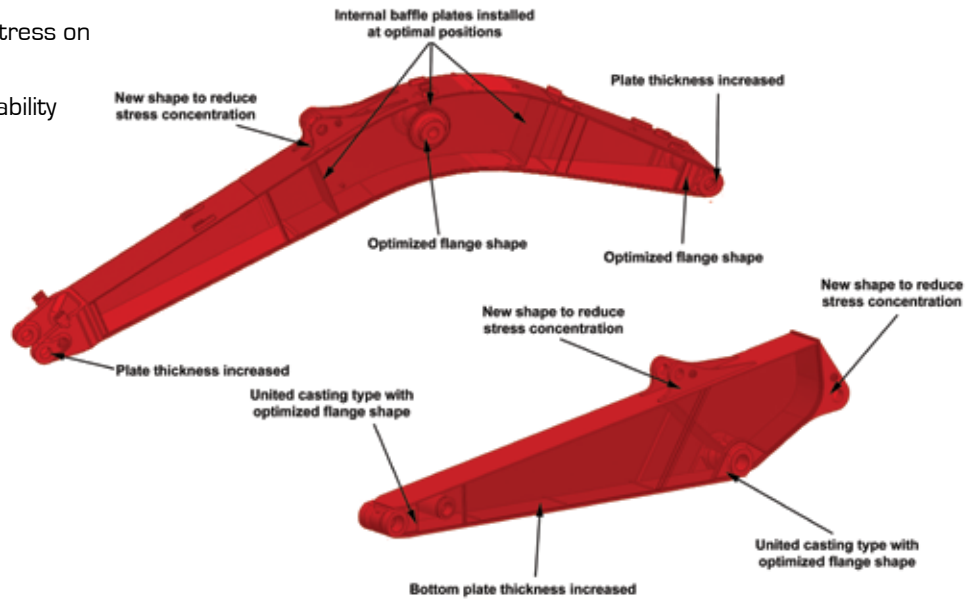
RemoteCARE

250x4 Long Front

X4 machines are rugged and durable, with structural improvements to the boom & arm structures, along with improvements to lower frame and travel components.

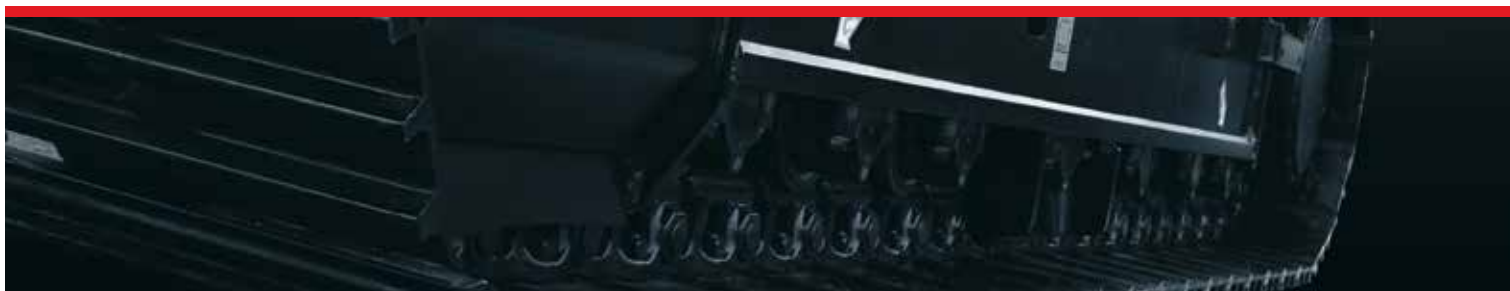
Boom & Arm

- Improved boss shapes reduce stress on boom & arm pin
- Cast boom tip for increased reliability
- Stronger cylinder mounts



Lower

- Thicker travel motor case - up to 32% increase
- Thicker plating between side frame and travel motor case - up to 12% increase
- Larger track rollers - up to 7% increase
- Front Idler Hub: Longer hub
- Track Roller: Diameter of tread increased
- Travel Motor Case: Plate thickness increased
- Travel Motor Cover: Hexagon head bolt installed for easy cleaning
- Track Guide: Shape change
- Side Frame Partition: Shape change
- Side Frame: Shape change for easy cleaning



X4 SERIES SPECIFICATIONS



Engine

Isuzu AQ-4HK1X Final Tier 4 turbocharged diesel engine with electronic control (ECM) and high pressure common-rail fuel injection, 4-cylinder, water-cooled, Cooled Exhaust Gas Recirculation (CEGR), Intercooler, Variable-Geometry Turbocharger (VGT), Diesel Oxidation Catalyst (DOC) and Selective Catalytic Reduction (SCR) system with Dosing Control Module and heated DEF lines and tank. Electronic fuel pump and priming, Fuel cooler, Auto-idle start, Auto warm-up, EPF engine protection, dual-stage fuel filtration, remote oil filter, engine oil sample port, green plug oil drain, double element air filter.

SAE J 1349 net horsepower.....	177 hp (132 kW) @ 2,000 rpm
Displacement.....	317 cu in (5.2 L)
Maximum Torque.....	458 lbf-ft (621 Nm) @ 1,800 rpm
Starter.....	24V-5.0kW
Alternator.....	50 amp
Battery.....	(2) 12-volt 92 amp hours



Cab and Controls

ROPS and FOPS Level 1 certified with automatic climate control A/C and heat with defroster, 7" LED Hi-Definition color monitor with full time rear view camera display, fuel efficiency gauge, low-effort joysticks are pre-wired for auxiliary hydraulics, dual cab lights, control pattern changer, safety glass windows, sunroof with sunshade, shockless cab suspension with four fluid cab mounts, SCM High-Back reclining suspension seat, sliding 4-position tilting control consoles, AM/FM sound system with MP3 auxiliary input jack, digital clock, dome light, seat belt, coat hook, cup holder, storage compartments, floor mat, footrests, ashtray, 24V cigarette lighter, 12V outlet, travel alarm, handrails, mirrors, side-entry cab filter, spare parts kit.

Three selectable work modes, RemoteCARE GPS system, anti-theft password protection system, onboard self-diagnostic system with memory and service interval reminders, auto idling system, one-touch decelerator, auto-idle engine shutdown, auto-power boost, neutral safety start, gate-lock safety shutoff.

A/C Rating.....	20,080 BTU/h
Heater Rating.....	21,030 BTU/h
Sound Level - Cab Interior.....	70.0 dB(A)
Sound Level - Exterior.....	100.0 dB(A)



Hydraulic System

Open-center system, two variable-displacement electronically controlled axial-piston pumps and one gear pump for pilot controls, main control valve with one 4-spool section and one 5-spool section with auxiliary spool: stackable, Auxiliary Control System, oil cooler, Auto-Power boost, boom and arm holding valves, 6 micron return filter, firewall, hydraulic oil sample port.

Hydraulic Pumps

Pump Output.....	2 x 61.8 gpm (234 L/min)
Pilot Pump Maximum Flow.....	5.3 gpm (20 L/min)

Relief Valve Settings

Boom/Arm/Bucket.....	4,970 psi (34.3 MPa)
in Power Boost.....	5,410 psi (37.3 MPa)
Swing Circuit.....	3,920 psi (27.0 MPa)
Travel Circuit.....	4,970 psi (34.3 MPa)

Hydraulic Cylinders

	number of cylinders - bore x rod x stroke
Boom.....	2 - 5.1" x 3.5" x 52.6" (130 mm x 90 mm x 1,335 mm)
Arm.....	1 - 5.9" x 4.1" x 68.4" (150 mm x 105 mm x 1,737 mm)
Bucket.....	3.7" x 2.6" x 34.7" (95 mm x 65 mm x 881 mm)



Swing

Planetary reduction powered by axial-piston motor, Internal ring gear with grease cavity for swing pinion, Swing bearing is single-row, shear type ball bearing, Mechanical disc swing brake, Auto-power swing.

Swing Speed.....	10.6 rpm
Tail Swing.....	9' 8" (2.95 m)
Swing Torque.....	51,500 lbf-ft (69.8 kNm)



Undercarriage

X Pattern carbody with 15' 3" (4.65 m) LC long undercarriage by 8' 6" (2.59 m) track gauge, Sealed and strutted track chain with track guide, Sealed rollers and idlers, Two-speed independent hydrostatic travel with compact planetary final drive, Disc type brakes, Adjustable track tension, Carbody belly pan.

Carrier Rollers.....	2 per Side
Track Rollers.....	9 per Side
Track Link Pitch.....	7.48" (190 mm)
Shoes.....	51 per Side
Shoe Width.....	31.5" (800 mm)
Ground Pressure.....	6.24 psi (0.043 MPa)



Travel System

Two-speed independent hydrostatic travel with compact axial-piston motors, Hydraulic motor powered output shaft coupled to a planetary reduction drive and track sprocket, All hydraulic components mounted within the width of side frame, Automatic downshift for high torque to overcome obstacles, Spring-applied hydraulic release parking brake built into each motor, Travel motors equipped with counterbalance valve to prevent over-speeding down an incline, Single-pedal straight line travel.

Travel Speeds.....	2.2 - 3.4 mph (3.5 - 5.5 km/h)
Drawbar Pull.....	45,000 lbf (200 kN)
Gradeability.....	70% (35°)



Attachment

Boom.....	33' 9" (10.3 m)
Available Arms	Digging Force
• 26' 3" (8.00 m).....	9,060 lbf (40 kN)
• Bucket Digging Force.....	17,300 lbf (77 kN)



Lubricant & Coolant Capacity

Fuel Tank.....	108 Gallons (410.0 Liters)
Hydraulic System.....	66 Gallons (250.0 Liters)
Hydraulic Tank.....	39 Gallons (147.0 Liters)
Final Drive (per side).....	1.3 Gallons (5.0 Liters)
Swing Drive.....	2.6 Gallons (9.7 Liters)
Engine Oil.....	6.1 Gallons (23.1 Liters)
DEF Tank.....	31.7 Gallons (120.0 Liters)
Coolant System.....	8.3 Gallons (31.4 Liters)

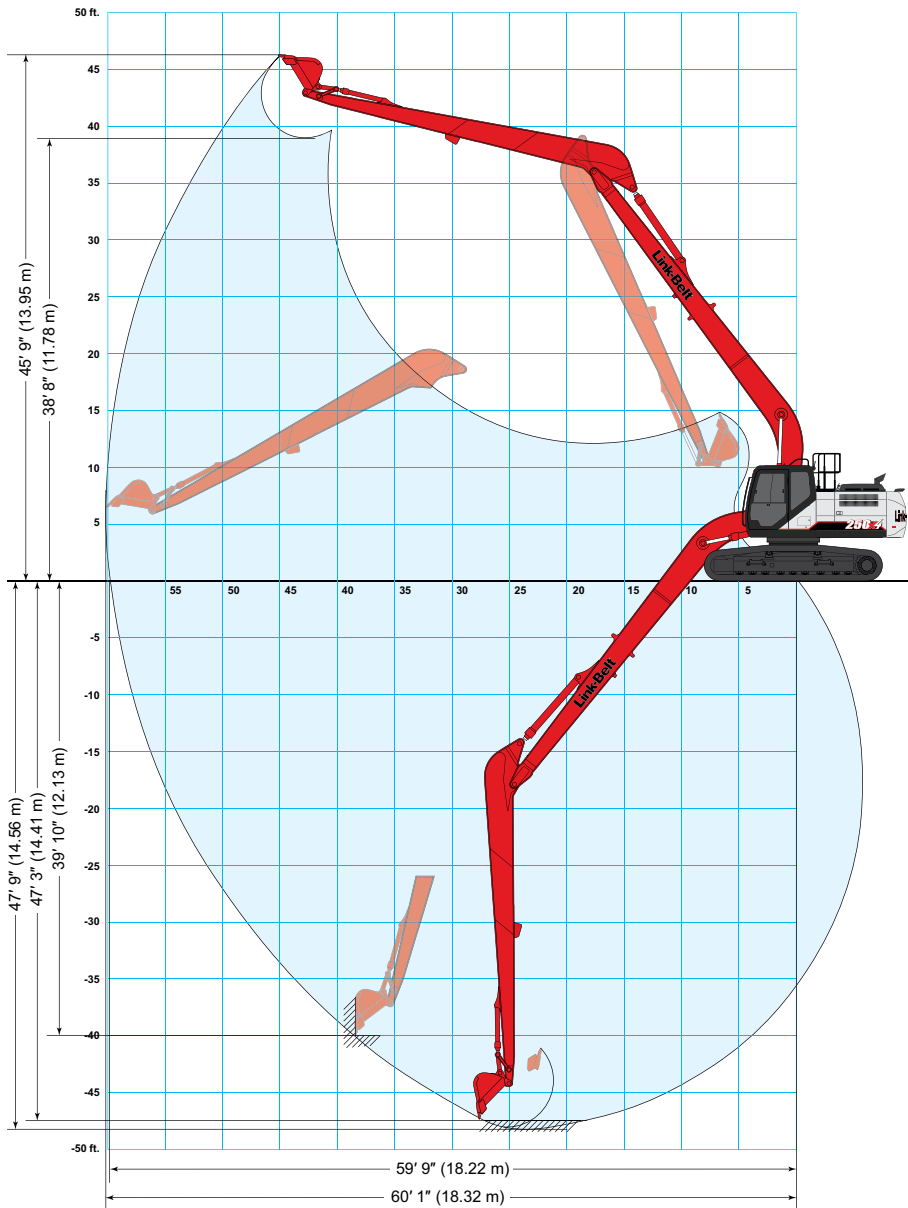


Operating Weight

Working weight with 31.5" (800 mm) shoes, 33' 9" (10.3 m) boom, 26' 3" (8.0 m) arm, 750 lb. (340 kg) bucket, 16,200 lb. (7 350 kg) counterweight..... 63,600 lbs. (28 800 kg)

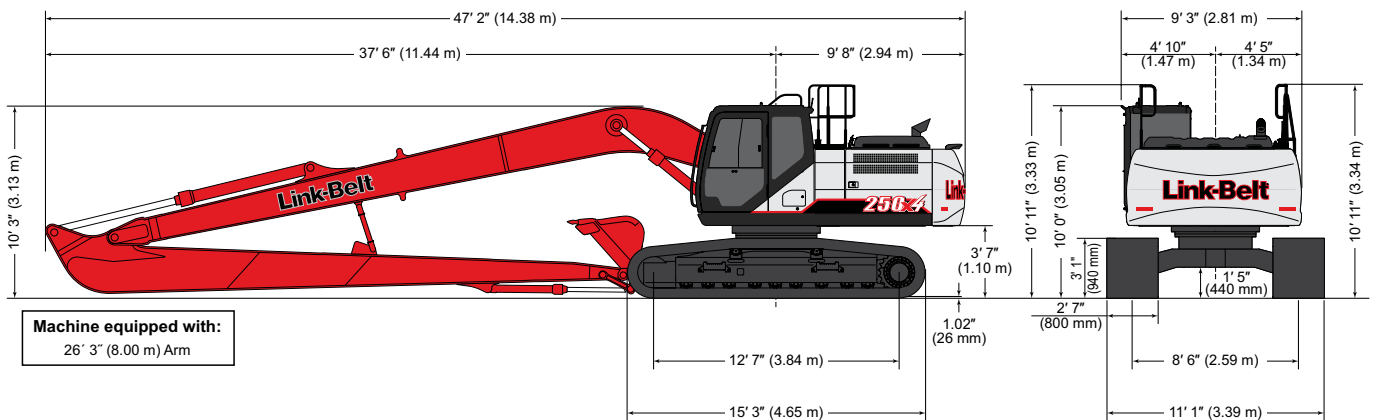
250x4 Long Front

Working Range



Machine Equipped with 33' 9" (10.3 m) Boom	Arm 26' 3" (8.00 m)
A. Maximum reach	60' 0" (18.32 m)
B. Maximum reach @ ground level	59' 9" (18.22 m)
C. Maximum dig depth	47' 9" (14.56 m)
D. Maximum dig height	45' 9" (13.95 m)
E. Maximum dump height	38' 8" (11.78 m)
F. Digging depth 8' (2.44 m) level bottom	47' 3" (14.41 m)
G. Bucket rotation	178°
H. Maximum vertical wall depth	39' 10" (12.13 m)

Travel Dimensions



Machine equipped with:
26' 3" (8.00 m) Arm

Working Range & Dimensions

X4 SERIES LIFT CAPACITIES

Radius of Load													
26' 3" (8.0 m) Arm with 33' 9" (10.3 m) Boom and 750 lb. (340 kg) Bucket with Power-Boost Applied													
End	Side	5' 0" (1.5 m)		10' 0" (3.0 m)		15' 0" (4.5 m)		20' 0" (6.0 m)		25' 0" (7.5 m)		30' 0" (9.0 m)	
		End	Side	End	Side	End	Side	End	Side	End	Side	End	Side
+10' 0" (3.0 m)	lbs			8,600*	8,600*	5,800*	5,800*	4,750*	4,750*	7,900*	7,900*	6,750*	6,750*
	kg			3 810*	3 810*	3 070*	3 070*	2 490*	2 490*	3 690*	3 690*	3 120*	3 120*
+5' 0" (1.5 m)	lbs			4,650*	4,650*	16,400*	16,400*	12,200*	12,200*	9,450*	9,450*	7,750*	7,750*
	kg			1 980*	1 980*	7 470*	7 470*	5 670*	5 670*	4 370*	4 370*	3 590*	3 590*
Ground Line	lbs	1,450*	1,450*	3,400*	3,400*	8,450*	8,450*	14,250*	13,200*	10,800*	9,750*	8,700*	7,500*
	kg	650*	650*	1 490*	1 490*	3 680*	3 680*	6 600*	6 100*	4 990*	4 520*	4 020*	3 480*
-5' 0" (1.5 m)	lbs	2,600*	2,600*	3,950*	3,950*	7,200*	7,200*	14,500*	11,900*	11,900*	8,850*	9,500*	6,850*
	kg	1 180*	1 180*	1 760*	1 760*	3 170*	3 170*	6 290*	5 530*	5 490*	4 110*	4 390*	3 190*
-10' 0" (3.0 m)	lbs	3,700*	3,700*	4,900*	4,900*	7,500*	7,500*	12,700*	11,150*	12,650*	8,250*	10,150*	6,400*
	kg	1 670*	1 670*	2 190*	2 190*	3 310*	3 310*	5 560*	5 180*	5 850*	3 820*	4 680*	2 970*
-15' 0" (4.5 m)	lbs	4,850*	4,850*	6,000*	6,000*	8,250*	8,250*	12,750*	10,800*	12,950*	7,850*	9,950*	6,100*
	kg	2 160*	2 160*	2 680*	2 680*	3 670*	3 670*	5 580*	5 010*	6 010*	3 660*	4 610*	2 830*
-20' 0" (6.0 m)	lbs	6,000*	6,000*	7,200*	7,200*	9,350*	9,350*	13,600*	10,800*	12,800*	7,750*	9,800*	5,950*
	kg	2 680*	2 680*	3 220*	3 220*	4 160*	4 160*	5 970*	5 000*	5 940*	3 610*	4 540*	2 760*
-25' 0" (7.5 m)	lbs	7,250*	7,250*	8,450*	8,450*	10,750*	10,750*	15,150*	10,900*	12,850*	7,800*	9,800*	5,950*
	kg	3 230*	3 230*	3 760*	3 760*	4 760*	4 760*	6 630*	5 070*	5 950*	3 630*	4 540*	2 770*
-30' 0" (9.0 m)	lbs	8,600*	8,600*	10,100*	10,100*	12,750*	12,750*	16,100*	11,200*	12,750*	8,000*	9,900*	6,100*
	kg	3 830*	3 830*	4 480*	4 480*	5 610*	5 610*	7 460*	5 200*	5 910*	3 710*	4 600*	2 830*
-35' 0" (10.5 m)	lbs	10,100*	10,100*	12,150*	12,150*	15,350*	15,350*	14,950*	11,650*	11,950*	8,350*	9,750*	6,400*
	kg	4 540*	4 540*	5 380*	5 380*	6 740*	6 740*	6 970*	5 390*	5 560*	3 860*	4 550*	2 950*
-40' 0" (12.0 m)	lbs			14,400*	14,400*	17,000*	17,000*	13,150*	12,300*	10,500*	8,850*	8,550*	6,850*
	kg			6 430*	6 430*	7 840*	7 840*	6 180*	5 670*	4 950*	4 080*	4 040*	3 140*
-45' 0" (13.5 m)	lbs							10,200*	10,200*	8,050*	8,050*		
	kg							4 940*	4 940*	3 930*	3 930*		

Radius of Load													
26' 3" (8.0 m) Arm with 33' 9" (10.3 m) Boom and 750 lb. (340 kg) Bucket with Power-Boost Applied													
End	Side	35' 0" (10.5 m)		40' 0" (12.0 m)		45' 0" (13.5 m)		50' 0" (15.0 m)		55' 0" (16.5 m)		Cap at Max. Reach	
		End	Side	End	Side	End	Side	End	Side	End	Side	End	Side
+40' 0" (12.0 m)	lbs											2,850*	2,850*
	kg											1 290*	1 290*
+35' 0" (10.5 m)	lbs							3,550*	3,550*			2,800*	2,800*
	kg							1 630*	1 630*			1 260*	1 260*
+30' 0" (9.0 m)	lbs					3,700*	3,700*	3,750*	3,750*			2,750*	2,750*
	kg					1 670*	1 670*	1 700*	1 700*			1 250*	1 250*
+25' 0" (7.5 m)	lbs					3,850*	3,850*	3,850*	3,850*	3,550*	3,100*	2,800*	2,800*
	kg					1 750*	1 750*	1 750*	1 750*	1 700*	1 470*	1 260*	1 260*
+20' 0" (6.0 m)	lbs					4,100*	4,100*	4,000*	3,850*	3,850*	3,000*	2,850*	2,600*
	kg					1 870*	1 870*	1 820*	1 800*	1 780*	1 420*	1 280*	1 170*
+15' 0" (4.5 m)	lbs			4,700*	4,700*	4,400*	4,400*	4,200*	3,700*	4,050*	2,900*	2,900*	2,400*
	kg			2 180*	2 180*	2 030*	2 030*	1 920*	1 730*	1 870*	1 360*	1 320*	1 080*
+10' 0" (3.0 m)	lbs	5,900*	5,900*	5,300*	5,300*	4,800*	4,350*	4,500*	3,450*	4,250*	2,750*	3,050*	2,250*
	kg	2 740*	2 740*	2 440*	2 440*	2 220*	2 040*	2 060*	1 630*	1 950*	1 300*	1 380*	1 010*
+5' 0" (1.5 m)	lbs	6,650*	6,400*	5,850*	5,100*	5,250*	4,100*	4,800*	3,250*	4,350*	2,600*	3,200*	2,150*
	kg	3 070*	2 970*	2 700*	2 380*	2 420*	1 910*	2 210*	1 530*	2 030*	1 230*	1 460*	970*
Ground Line	lbs	7,350*	5,900*	6,350*	4,700*	5,650*	3,800*	5,050*	3,050*	4,200*	2,450*	3,450*	2,100*
	kg	3 380*	2 750*	2 940*	2 200*	2 610*	1 780*	2 340*	1 440*	1 970*	1 160*	1 560*	950*
-5' 0" (1.5 m)	lbs	7,950*	5,450*	6,850*	4,400*	5,800*	3,550*	4,850*	2,900*	4,100*	2,350*	3,700*	2,100*
	kg	3 660*	2 540*	3 150*	2 040*	2 700*	1 660*	2 260*	1 350*	1 910*	1 100*	1 680*	950*
-10' 0" (3.0 m)	lbs	8,200*	5,100*	6,700*	4,100*	5,600*	3,350*	4,700*	2,750*	4,000*	2,250*	3,800*	2,150*
	kg	3 810*	2 370*	3 130*	1 920*	2 600*	1 570*	2 190*	1 290*	1 870*	1 060*	1 730*	970*
-15' 0" (4.5 m)	lbs	7,950*	4,850*	6,500*	3,900*	5,450*	3,200*	4,600*	2,650*			4,000*	2,250*
	kg	3 690*	2 250*	3 030*	1 830*	2 540*	1 500*	2 150*	1 250*			1 810*	1 020*
-20' 0" (6.0 m)	lbs	7,800*	4,700*	6,400*	3,850*	5,400*	3,150*	4,600*	2,650*			4,300*	2,450*
	kg	3 630*	2 190*	2 980*	1 780*	2 500*	1 470*	2 140*	1 230*			1 940*	1 100*
-25' 0" (7.5 m)	lbs	7,800*	4,750*	6,450*	3,850*	5,450*	3,200*					4,750*	2,750*
	kg	3 630*	2 200*	2 990*	1 790*	2 520*	1 490*					2 130*	1 230*
-30' 0" (9.0 m)	lbs	7,950*	4,850*	6,550*	4,000*	5,600*	3,350*					5,400*	3,200*
	kg	3 670*	2 250*	3 040*	1 840*	2 580*	1 550*					2 420*	1 440*
-35' 0" (10.5 m)	lbs	8,050*	5,100*	6,650*	4,250*							6,300*	3,950*
	kg	3 730*	2 360*	3 100*	1 960*							2 840*	1 750*
-40' 0" (12.0 m)	lbs	6,850*	5,350*									6,750*	5,250*
	kg	3 280*	2 540*									3 050*	2 290*
-45' 0" (13.5 m)	lbs											7,150*	7,150*
	kg											3 220*	3 220*

Lifting Capacities

Notes: Excavator lifting capacities

- Lifting capacities shown should not be exceeded. Weight of all lifting accessories must be deducted from the above lifting capacities.
- Lifting capacities are based on machine standing on firm, uniform supporting surface. User must make allowances for job conditions such as soft or uneven ground.
- Lifting capacities shown do not exceed 75% of minimum tipping loads or 87% of hydraulic capacities. **Capacities marked with an asterisk (*) are limited by hydraulic capacities.**
- Least stable position is over the side.
- Operator should be fully acquainted with the Operator's Manual & Operating Safety Booklet, furnished by LBX before operating the machine.
- Capacities apply only to the machine as originally manufactured and normally equipped by LBX Company, LLC.
- Lift capacity ratings are based on ISO 10567, "Earthmoving Machinery - Hydraulic Excavators - Lift Capacity."

250x4 Long Front

Standard and Optional Equipment

CAB	Travel Alarm with Cancel Switch.....S	HYDRAULICS	Fuel Tank Belly Pan.....S
12V Power Outlet.....S	Trip Meter (Digital).....S	Arm Regeneration.....S	Hand Rail (RH access).....S
270° Rear-View Camera Display on Monitor...O	Wiper & Washer.....S	Arm Speed Assistance (2 Pump Flow)...S	ISO Guard Rails.....S
AM/ FM Sound System.....S	Wiper Switch on RH Joystick.....S	Attachment Cushion Valve.....S	Lifting Eyes for Counterweight.....S
Anti-Theft Device.....S	ENGINE	Auto Swing Priority.....S	Lockable Fuel Cap and Service Doors...S
Auxiliary Switches on Control Lever.....S	50A Alternator.....S	Auxiliary Flow Control.....S	Lockable Tool Box.....S
Cab Filter - External.....O	85A Alternator.....O	Auxiliary Tool Settings (Memory).....S	Rubber Bumper Guards.....O
Cab Handrails.....S	Air Filter (Double Element).....S	Auxiliary Valve.....S	Turntable Tub.....S
Cab Interior Light.....S	Air Filter Restriction Indicator.....S	Boom Regeneration.....S	Work Lights (Boom and Tool Box).....S
Cab ISO-Mounts.....S	Air Pre-Cleaner (Cyclone type).....O	Boom Speed Assistance (2 Pump Flow)...S	ATTACHMENT
Cab Light (2 LED).....O	Auto Warm-Up System.....S	Bucket Curl Assist.....S	26' 3" (8.00 m) Arm.....O
Cab Light (2).....S	Auto-Idle.....S	Control Pattern Changer (2 way).....S	33' 9" (10.3 m) Main Boom Section...S
Cab Sun Screen (rear).....O	Auto-Idle Engine Shutdown.....S	Electronically Controlled Hydraulic Pumps..S	Auxiliary Pipe Brackets.....S
Clear Roof Window.....S	Battery Disconnect Switch.....S	Fire Wall.....S	Boom Work Light.....S
Climate Control A/ C and Heater.....S	CEGR (Cooled Exhaust Gas Recirculation)..S	Free Swing.....O	Bucket Anti-Clatter Device.....S
Cup Holder.....S	Cooling Fan.....S	Holding Valve (Arm & Boom).....S	Chrome Pins.....S
Defroster.....S	Diesel Oxidation Catalyst (DOC).....S	Hose Burst Check Valve.....O	Easy Maintenance System (EMS).....S
Digital Clock.....S	Drain for Fuel Tank.....S	Hydraulic Filter Restriction Indicator...S	HD Bucket Linkage.....O
Emergency Exit and Hammer.....S	Dual Remote Fuel Filters with	Hydraulic Oil Sample Port.....S	Quick Couplers.....O
Face Vent.....S	Water Separators.....S	Long Life Hydraulic Oil (5,000 Hour).....S	Remote Lube Bank.....S
Floor Mat.....S	EGR Coolers.....S	Neutral Pump De-Stroke.....S	Teardrop Pin Retention Keepers.....S
FOPS Head Guard (Level 2).....O	Emergency Engine Stop.....S	Oil Cooler.....S	Thumbs.....O
FOPS Level 1 Certified.....S	Engine Idle System.....S	Power Boost.....S	PARTS KIT
Front Guard (Mesh).....O	Engine Oil Sample Port.....S	Power Save.....S	Bucket Anti-Clatter Device.....S
Front Guard (OPG 1,2).....O	Engine Protection Feature.....S	Pressure Reading on Monitor.....S	Engine Manual.....S
Front Window One-Touch Lock.....S	External Fuel Gauge.....S	Proportional Hydraulic Controls.....O	Engine Oil Filter.....S
Gate Lock Hydraulic Activation.....S	External DEF Gauge.....S	Pump Stand-By Pressure.....S	Filter Wrench.....S
Horn.....S	Fan Housing.....S	Single Pedal Travel.....S	Fuel Filters.....S
Hour Meter (Digital).....S	Fuel Cooler.....S	Straight Travel Circuit.....S	Grease Gun.....S
LED Color Monitor.....S	Fuel Filter Restriction Indicator.....S	AUXILIARY HYDRAULIC OPTIONS	Green Plug Drain Hose for Engine Oil Drain..S
LED Light Kit for Side Camera (1).....O	Fuel Management System.....S	Secondary Aux w/ Proportional Joysticks...O	Hydraulic Return Filter.....S
LED Lights for Rear Camera (2).....O	Fuel Shut-Off Valve.....S	UNDERCARRIAGE	Ignition Keys.....S
Magazine Storage Rack.....S	Fuel Usage History.....S	600 mm (23.5" in) 3-Bar Steel Grousers...O	Pilot Circuit Hydraulic Filter.....S
Maintenance Interval Reminders.....S	Fuel Usage Monitor.....S	700 mm (27.5" in) 3-Bar Steel Grousers...O	Rearview Mirrors.....S
MP3 Auxiliary Input Jack.....S	Glow Plug Pre-Heat.....S	800 mm (31.5" in) 3-Bar Steel Grousers...S	Work Light for Boom.....S
On-Board Diagnostic System.....S	Idle-Start.....S	Carbody Belly Pan (Swivel Guarding).....S	
One-Piece Right Window.....S	Intercooler.....S	Center Track Guide (single).....S	
Radio Mute Switch.....S	Neutral Start.....S	Center Track Guide (triple).....O	
Rain Deflector.....O	One-Touch Idle.....S	Lashing Points (Tie-Downs).....S	
Rear View Camera.....S	Passive Emissions Regeneration.....S	Long Undercarriage.....S	
ISO Mirrors (3).....S	Radiator / Oil Cooler / Intercooler	Sealed Link Chain.....S	
RemoteCARE Support System (GPS).....S	Protective Screen.....S	Steps.....S	
Roof Sun Shade.....S	Refuel Pump.....O	Strutted Track Chain.....S	
ROPS Certified Structure.....S	Remote Engine Oil Drain.....S	X-Pattern Carbody.....S	
Safety Glass Windows.....S	Remote Oil Filter.....S	UPPERSTRUCTURE	
SCM Air-Suspension Seat with Tilt & Heater...O	Reversible Cooling Fan.....O	Belly Pans.....S	
SCM Suspension Seat.....S	Selective Catalytic Reduction (SCR).....S	Center Cover (Over Main CV).....S	
Seat Recline.....S	Tropical Package.....O		
Selectable Monitor Languages.....S	DEF Gauge on Monitor.....S		
Small Storage.....S	VGT Turbocharger.....S		

Equipment Key
Standard - S Optional - O

Bucket Sizes

Bucket Type	SAE Heaped Capacity		Width Outside Lip		Bucket Weight		Number of Teeth	Arm Length 26' 3" (8.00 m)
	(yd³)	(m³)	(in)	(mm)	(lbs)	(kg)		
STDP Standard duty plate	0.50	0.38	24	610	791	359	4	H
	0.66	0.50	30	762	889	403	4	M
	0.82	0.63	36	914	1007	457	5	L
	0.88	0.67	42	1067	1110	503	6	L
DITCH	0.77	0.59	54	1372	903	410	0	M
	0.86	0.66	60	1524	964	437	0	L
	0.95	0.73	60	1524	998	453	0	L

Approval Code For Arm/Bucket Combinations	
H.....	Heavy material (up to 3,370 lbs./yd³)
M.....	Medium material (up to 2,700 lbs./yd³)
L.....	Light material (up to 2,020 lbs./yd³)
N/A.....	Not applicable

Litho in USA 11/14 #LBX2267

LBX® and Link-Belt® are registered trademarks. Copyright 2014. All rights reserved. We are constantly improving our products and therefore reserve the right to change designs and specifications.

Standard & Optional Equipment