

LONKING

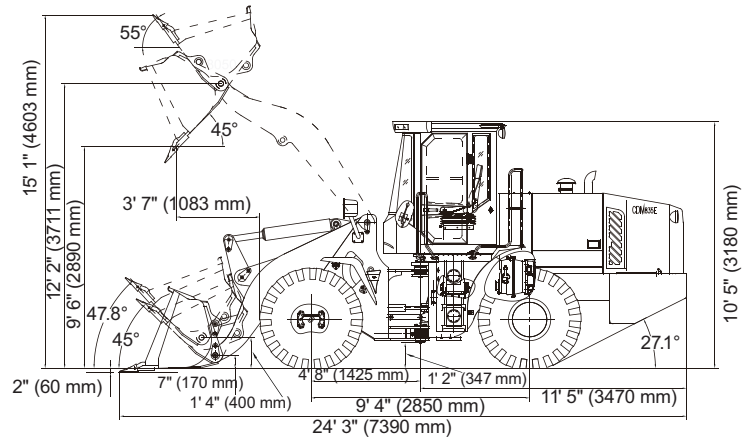
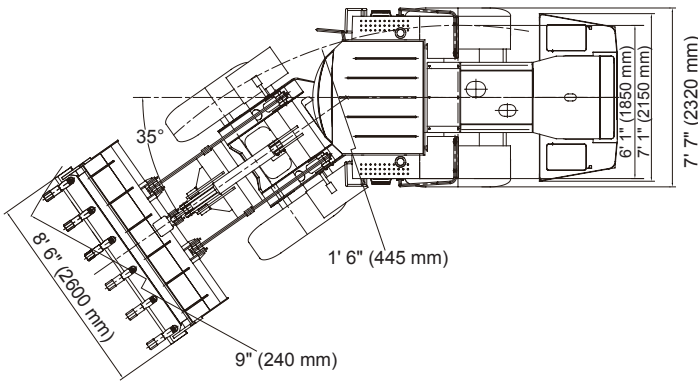
CDM835

WHEEL LOADER



- CUMMINS TIER 3 ENGINE
- LONKING TRANSMISSION
- LONKING AXLES
- 3-YEAR WARRANTY
- BLUETOOTH HD RADIO
- NAVMAN TELEMATICS

OPERATING WEIGHT	26,620 lb (12 100 kg)
ENGINE POWER	133 hp (99 kW)
BUCKET CAPACITY	3.0 yd ³ (2,3 m ³)
BREAKOUT FORCE	35,969 lbf (160 kN)



ENGINE Cummins QSB6.7-C133

Rated Power	133 hp (99 kW) / 2,200 rpm
Cylinders	6
Displacement	409 in ³ (6.7 L)
Max. Torque / RPM	750 hp (560 kW) / 1500 rpm
Aspiration	Turbocharged, charge-air cooled
Air Cleaner	3-element dry type
Emission Standard	EPA Tier 3 / EU Stage IIIA

HYDRAULICS / STEERING

Pump (loader, steering)	Gear pump
Max. Rated Flow (loading)	46.5 gpm (176 L/m) 2200 rpm
Max. Rated Flow (steering)	23.3 gpm (88 L/m) 2200 rpm
System Relief Pressure	16/14 Mpa
Pilot Control System Pressure	2.5 Mpa
Steering	Hydraulic load-sensing
Articulation Angle	±35°

Hydraulic Cycle Times

Raise	5.5 sec
Dump	1.3 sec
Lower	3.7 sec
Total	10.5 sec

TRANSMISSION Countershaft Powershift

Torque Converter	single-stage, single-turbine, 3 elements
Max. Travel Speeds	3F / 3R
Forward	4.0 / 7.5 / 20.0 mph 6.5 / 12.0 / 32.0 km/h
Reverse	4.2 / 7.8 / 20.8 mph 6.8 / 12.5 / 33.5 km/h

ELECTRICAL

Batteries	24v
Battery Capacity	105 Ah / 6800 CCA each
Alternator Rating	70A
Work Lights	4

CAB ROPS / FOPS

Radio	JVC AHD-75BT High-Def Bluetooth
Telematics	Navman Wireless Qantium 300

AXLES / BRAKES

Final Drives	Planetary reduction
Service Brakes	Full hydraulic wet-disc
Parking Brakes	Flexible shaft controlled caliper

TIRES 17.5-25 L-3 12PR

Optional 20.5-25 L-3 16PR

PERFORMANCE

Operating Weight	26,620 lb (12 100 kg)
Lift Capacity	7,716 lb (3500 kg)
Bucket Capacity	3.0 yd ³ (2,3 m ³)
Tip Capacity	18,298 lb (8300 kg)
Full-Turn Tip Capacity	16,535 lb (7500 kg)
Breakout Force Capacity	35,969 ±3 lbf (160 ±3 kN)