

# 1043

## TELEHANDLER



### Performance

|                             |             |           |
|-----------------------------|-------------|-----------|
| Rated Capacity              | 10,000 lb   | 4,536 kg  |
| Maximum Lift Height         | 43 ft       | 13.1 m    |
| Load at Max Height          | 7,000 lb    | 3,175 kg  |
| Maximum Forward Reach       | 30 ft 5 in. | 9.3 m     |
| Load at Max Reach           | 2,700 lb    | 1,225 kg  |
| Frame Leveling              | 10°         |           |
| Lift Speed (boom retracted) |             |           |
| Up                          | 13 sec      |           |
| Down                        | 9 sec       |           |
| Boom Speed                  |             |           |
| Extended                    | 15 sec      |           |
| Retracted                   | 13 sec      |           |
| Top Travel Speed (4-Speed)  | 19 mph      | 31 kph    |
| Drawbar Pull (loaded)       | 24,912 lb   | 101.2 kN  |
| Outside Turning Radius      | 12 ft       | 3.67 m    |
| Operating Weight            | 26,235 lb   | 11,900 kg |

### Standard Specifications

#### Engine

|                           |                          |        |
|---------------------------|--------------------------|--------|
| Make and Model            | Cummins QSF3.8L Tier 4 F |        |
| No. of Cylinders          | 4                        |        |
| Displacement              | 232 cu in.               | 3.8 L  |
| Gross Power Basic         | 110 hp                   | 83 kW  |
| Maximum Torque @ 1500 rpm | 348 lb-ft                | 472 Nm |
| Fuel Tank Capacity        | 38.3 gal                 | 145 L  |

#### Transmission

Powershift 4-speed forward and 3-speed reverse.

#### Axles

Trunnion mounted planetary steer axles. Integral steer cylinder.  
High bias limited slip differential on front axle.

#### Brakes

Service brakes are inboard wet disc brake on front and rear axles.  
Parking brakes are wet disc spring-applied hydraulic release on front axle.

#### Tires

|          |                      |
|----------|----------------------|
| Standard | 400/75-28            |
| Optional | Foam-Filled or Solid |

#### Cab

- Certified ROPS/FOPS structure
- Horn
- Tilt & declutch on joystick
- Adjustable seat
- Single joystick controls
- Anti-theft

#### Steering 4-Wheel

Power steering with manual backup.  
Operator selectable 4-wheel circle, 4-wheel crab, 2-wheel front.

#### Instruments

- Volt meter
- Engine oil pressure gauge
- Fuel gauge
- Hourmeter
- Temperature gauge
- DEF gauge

#### Hydraulic System-Implement

|          |        |         |
|----------|--------|---------|
| Capacity | 40 gal | 151.4 L |
|----------|--------|---------|

Load sense piston pump. Auxiliary hydraulics used for all attachments equipped with cylinders or other hydraulic components.

### Accessories & Options

- Enclosed Cab
- Auxiliary Electrics
- Road Lights
- Air Conditioning
- Work Lights
- Rotating Beacon
- Hydraulic Coupler
- Fenders
- Brick Guards
- Arctic Package
- Multi-function display with reversing camera
- Ride Control
- Reverse Sensing System
- Boom Brushes
- Secondary Steering
- Wiper Package

### Attachments

|                                |                                 |                          |
|--------------------------------|---------------------------------|--------------------------|
| Standard Carriage              | 50 in.                          | 1.3 m                    |
|                                | 60 in.                          | 1.5 m                    |
|                                | 72 in.                          | 1.8 m                    |
| Side-Tilt Carriage             | 50 in.                          | 1.3 m                    |
|                                | 60 in.                          | 1.5 m                    |
|                                | 72 in.                          | 1.8 m                    |
| Swing 90° Carriage             | 72 in.                          | 1.8 m                    |
| Dual Fork Positioning Carriage | 50 in.                          | 1.3 m                    |
| Side-Shift Carriage            | 50 in.                          | 1.3 m                    |
| Tower                          | 8 ft                            | 2.4 m                    |
| Tower with Side Tilt           | 8 ft                            | 2.4 m                    |
| Pallet Forks                   | 2.36 in. x 4 in. x 48 in.       | 60 mm x 102 mm x 1.2 m   |
|                                | 2.36 in. x 5 in. x 48 in.       | 60 mm x 127 mm x 1.2 m   |
|                                | 2.00 in. x 6 in. x 72 in.       | 51 mm x 152 mm x 1.8 m   |
| Lumber Forks                   | 2.00 in. x 7 in. x 60 in.       | 51 mm x 178 mm x 1.5 m   |
|                                | 2.36 in. x 6 in. x 60 in.       | 60 mm x 152 mm x 1.5 m   |
| Cubing Forks                   | 2 in. x 2 in. x 48 in.          | 51 mm x 51 mm x 1.2 m    |
| Fork Extensions                | 90 in.                          | 2.3 m                    |
| Material Bucket                | 72 in., 1.0 cu yd               | 1.8 m, 0.76 m³           |
|                                | 96 in., 1.5 cu yd               | 2.4 m, 1.15 m³           |
|                                | 102 in., 2.0 cu yd              | 2.6 m, 1.53 m³           |
| Grapple Bucket                 | 96 in., 1.75 cu yd              | 2.4 m, 1.34 m³           |
| Truss Boom                     | 3 ft (winch), 4,000 lb Capacity | 0.9 m, 1,814 kg Capacity |
| Truss Boom                     | 12 ft, 2,000 lb                 | 3.7 m, 907 kg            |
|                                | 15 ft, 2,000 lb                 | 4.6 m, 907 kg            |
|                                | 12 ft with winch, 2,000 lb      | 3.7 m, 907 kg            |
| Fork Mounted Work Platform     | 8 ft, 1,000 lb Capacity         | 2.4 m, 455 kg Capacity   |
| Bucket-Fork Mounted            | 60 in., 1.3 cu yd               | 1.5 m, 1.0 m³            |
| Material Handling Arm          | 4,000 lb Capacity               | 1,814 kg Capacity        |
| Trash Hopper                   | 72 in., 1.9 cu yd               | 1.8 m, 1.5 m³            |
| Lifting Hook-Fork Mounted      |                                 |                          |
| Lifting Hook-Coupler Mounted   |                                 |                          |

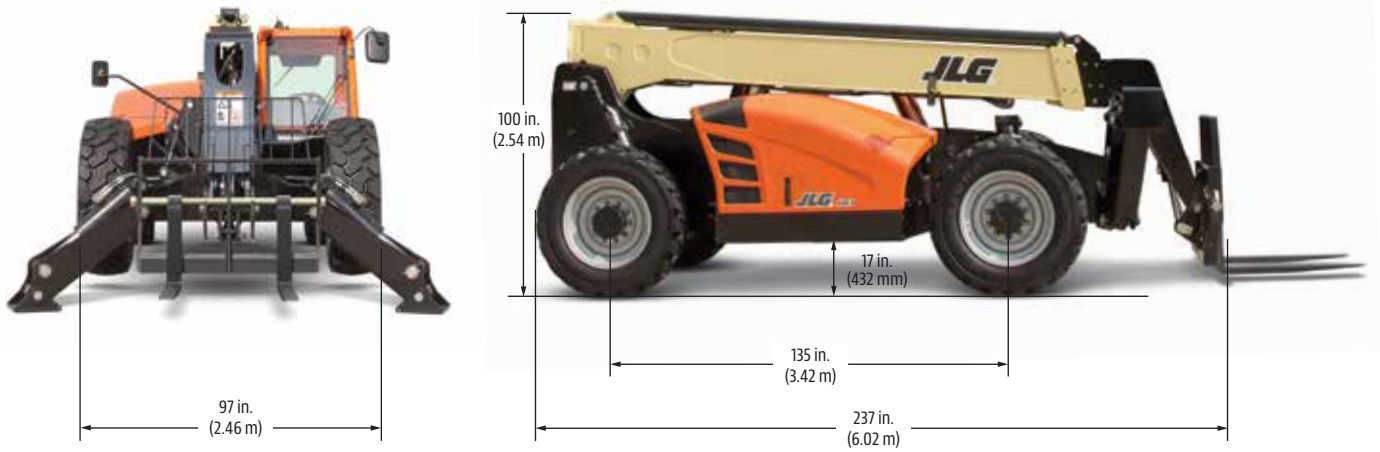
# 1043

TELEHANDLER

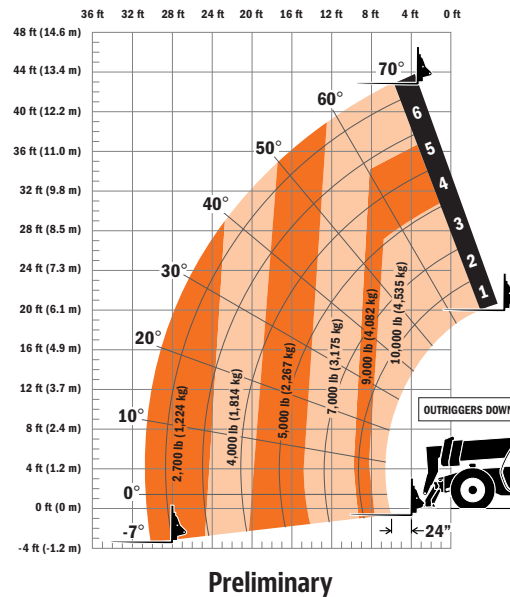
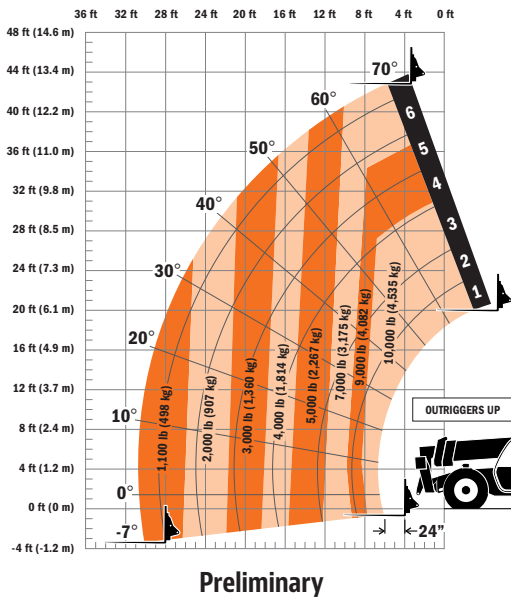


## Dimensions

All dimensions are approximate.



## Load Chart



## The JLG "1 & 5" Warranty

JLG Industries, Inc. backs its products with its exclusive "1 & 5" Warranty. We provide coverage on all products for one (1) full year, and cover all specified major structural components for five (5) years. Due to continuous product improvements, we reserve the right to make specification and/or equipment changes without prior notification. This machine meets or exceeds applicable OSHA Regulations in 29 CFR 1910.67, 29 CFR 1926.453, ANSI A92.5-2006, and CSA Standard CAN3-B354.2-M82, as originally manufactured for intended applications.

Part No.: 3132242  
R0215  
Printed in USA

**JLG Industries, Inc.**  
1 JLG Drive  
McCconnellsburg, PA 17233-9533  
Telephone 717-485-5161  
Toll-free in US 877-JLG-LIFT  
Fax 717-485-6417  
[www.jlg.com](http://www.jlg.com)

**An Oshkosh Corporation Company**